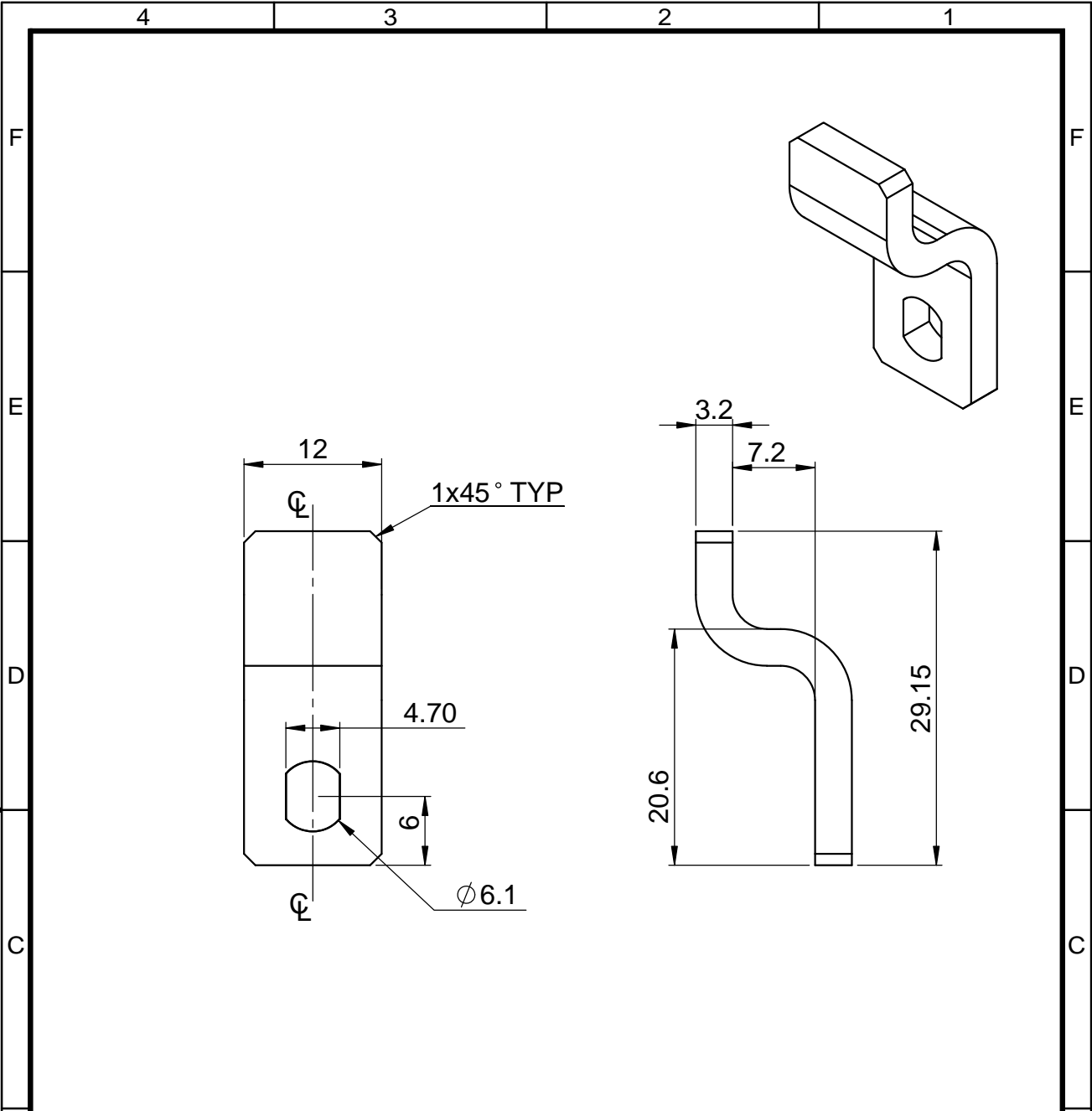


4									
3									
2									
1									
0		12.12.15	ORIGINAL					DSA 36 107 0 183	2 11
REV	CN.NO.	DATE	DESCRIPTION			CHECKED	APPROVED	NEXT ASSEMBLY	ITEM QTY
MATERIAL			FINISH		PROJ.	TOL.GEN. ± IS:2102		PRJ.	
SS TO AISI 304 / IS 6603						TOL.AXIS. ± (MED)		107	
DRAWN	CHECKED	APPROVED	DIMNS	SCALE	TITLE				
NANDHU			mm	NTS	HINGE SCREW				
DATE	12.12.15	DATE	DATE	DRG. NUMBER				SIZE	ISSUE
				DPD 36 107 0 042				A4	1
								NO.OF SHEETS	1
								1	

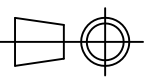
RESTRICTED

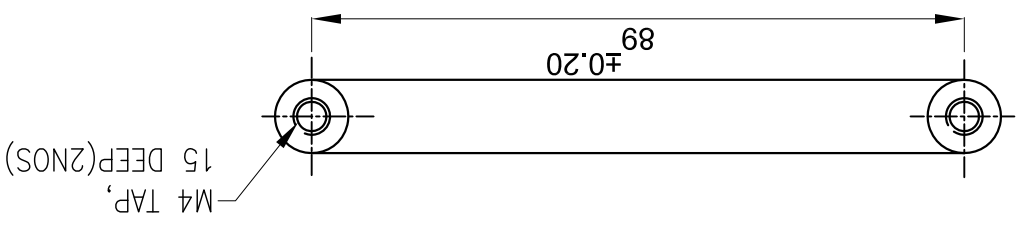


4									
3									
2									
1									
0		12.04.16	ORIGINAL				-	-	-
REV	CN.NO.	DATE	DESCRIPTION			CHECKED	APPROVED	NEXT ASSEMBLY	ITEM QTY
MATERIAL			FINISH			PROJ.		TOL.GEN. ± IS:2102	
SS 304			-					TOL.AXIS. ± (MED)	
PRJ.			GEN						
DRAWN		CHECKED		APPROVED		DIMNS	SCALE	TITLE	
NANDHU						mm	NTS	LOCK BRACKET	
DATE 12.04.16		DATE		DATE		DRG. NUMBER			SIZE
K E KERALA STATE ELECTRONICS DEVELOPMENT CORPORATION LIMITED		SPG/GEN/433			A4		ISSUE		
						NO.OF SHEETS		1	
								1	

RESTRICTED

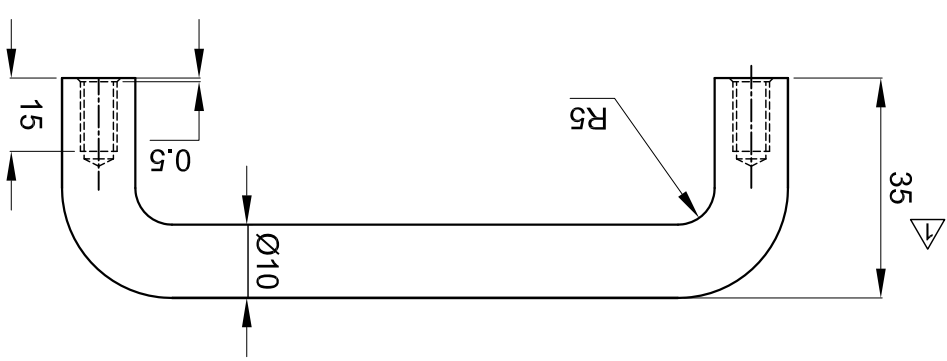
XX

1	2	3	4								
NO. OF SHEETS 1 / 1		DPD 36 054 3 613		KERALA STATE ELECTRONICS DEVELOPMENT CORPORATION LIMITED.		KOD		DATE		DATE	
SIZE A		DRG. NUMBER		ENGINEER		CHECKED		DRAWN NANDHU		DATE 13.12.15	
ISSUE 1		TITLE HANDLE		DIMNS m m		SCALE 1 : 1		MATERIAL Ø10 MS ROD		FINISH CHROMIUM PLATING	
PRJ. SP - 054		TOL. GEN. ± IS : 2102 TOL. AXIS. ± (MED.)		PROJ. 		APPROVED		ENGINEER		APPROVED	
NEXT ASSEMBLY		NUMBER		DESCRIPTION		DATE		CN. NO.		REV	
QTY		ITEM		ORIGINAL		4/7/05		0		0	
				REVISED		13.12.15		2		1	
								3			
								4			



89 ± 0.20

M4 TAP, 15 DEEP (2 NOS)



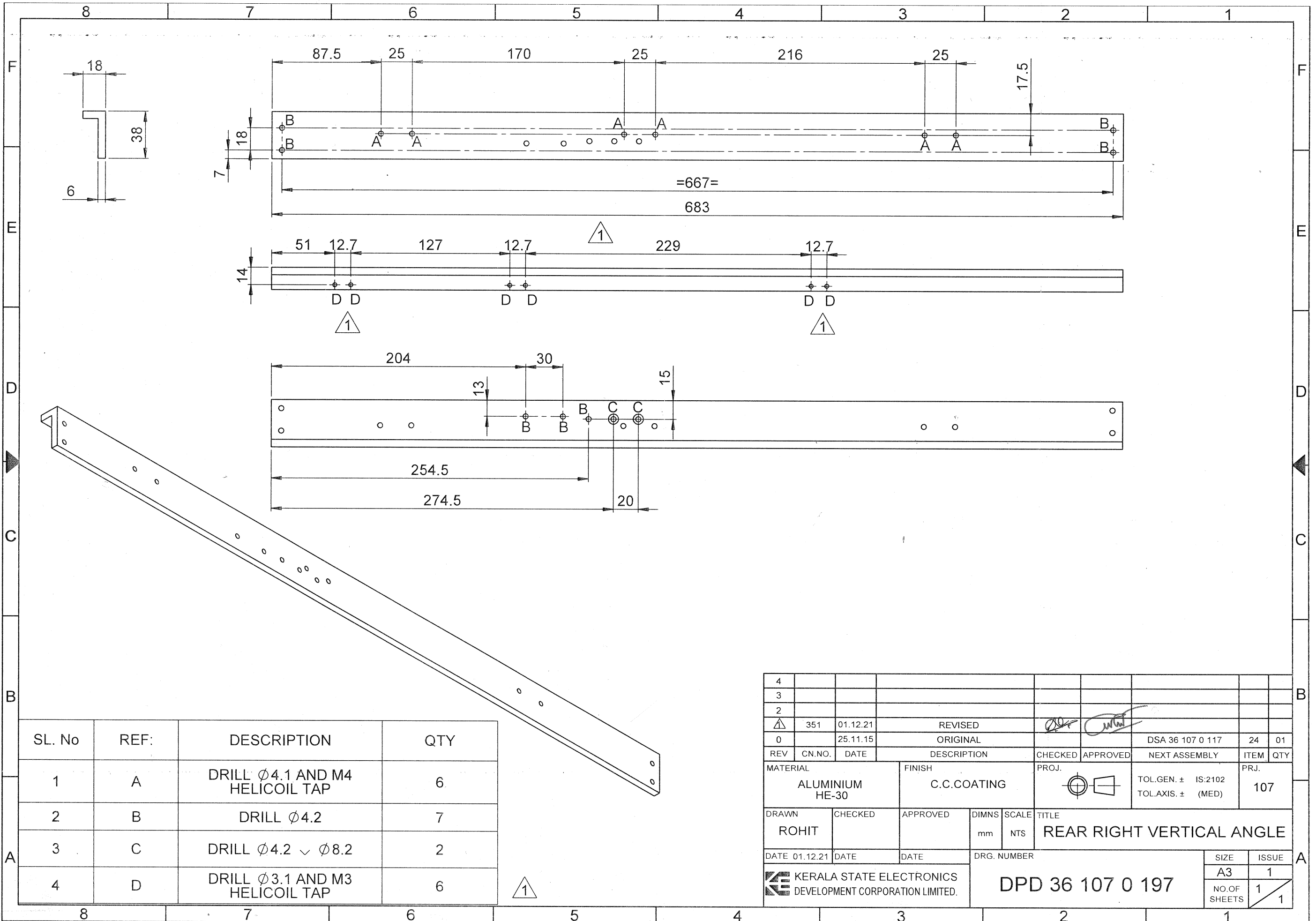
35

Ø10

15

0.5

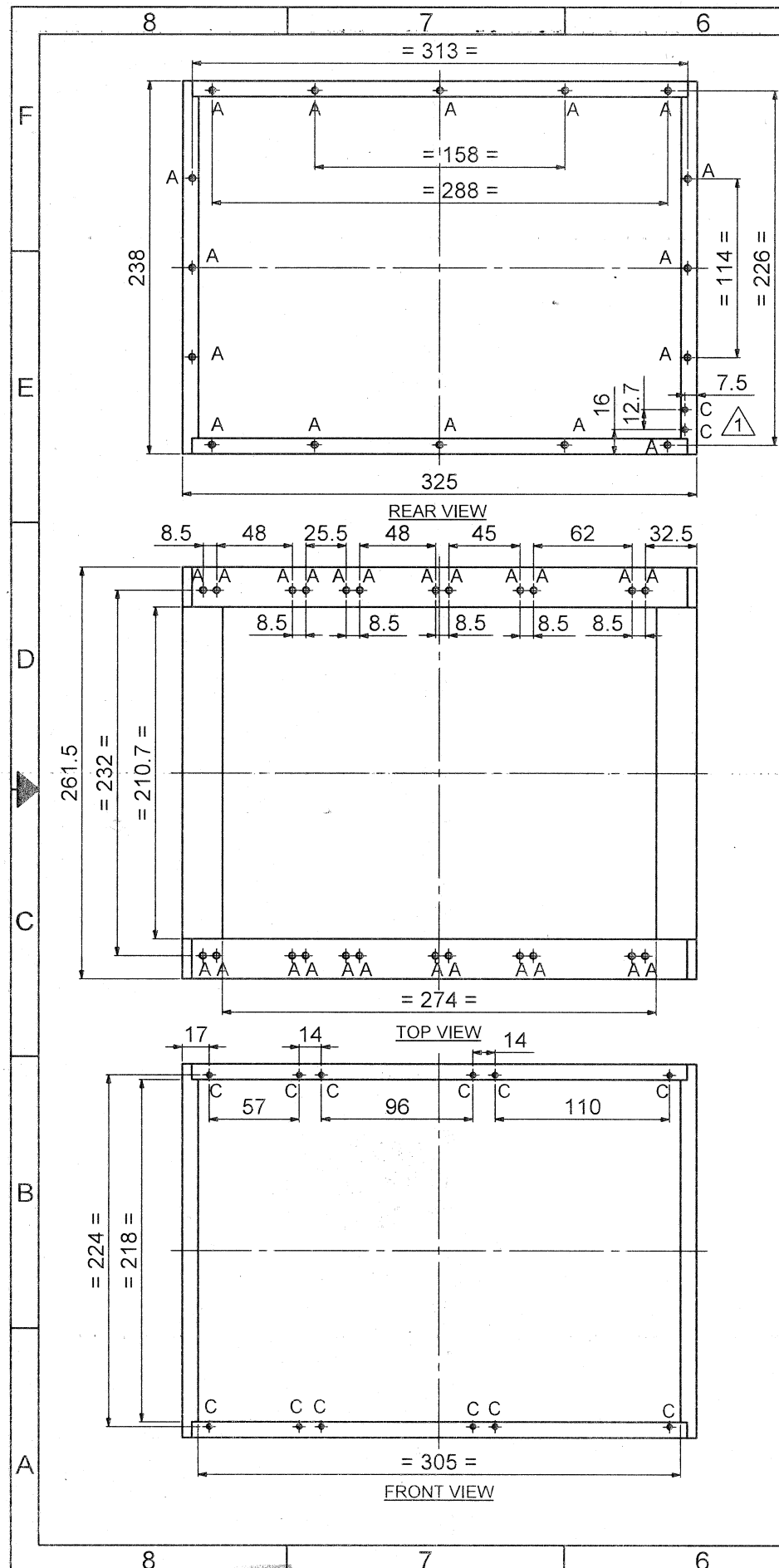
R5



SL. No	REF:	DESCRIPTION	QTY
1	A	DRILL $\phi 4.1$ AND M4 HELICOIL TAP	6
2	B	DRILL $\phi 4.2$	7
3	C	DRILL $\phi 4.2 \checkmark \phi 8.2$	2
4	D	DRILL $\phi 3.1$ AND M3 HELICOIL TAP	6

4										
3										
2										
1	351	01.12.21	REVISED							
0		25.11.15	ORIGINAL					DSA 36 107 0 117	24	01
REV	CN.NO.	DATE	DESCRIPTION	CHECKED	APPROVED	NEXT ASSEMBLY	ITEM	QTY		
MATERIAL			FINISH	PROJ.		TOL.GEN. \pm IS:2102		PRJ.		
ALUMINIUM HE-30			C.C.COATING			TOL.AXIS. \pm (MED)		107		
DRAWN	CHECKED	APPROVED	DIMNS	SCALE	TITLE					
ROHIT			mm	NTS	REAR RIGHT VERTICAL ANGLE					
DATE	01.12.21	DATE	DATE	DRG. NUMBER		SIZE		ISSUE		
				KERALA STATE ELECTRONICS DEVELOPMENT CORPORATION LIMITED.		DPD 36 107 0 197		A3		1
								NO.OF SHEETS		1/1

MASTER DOCUMENT

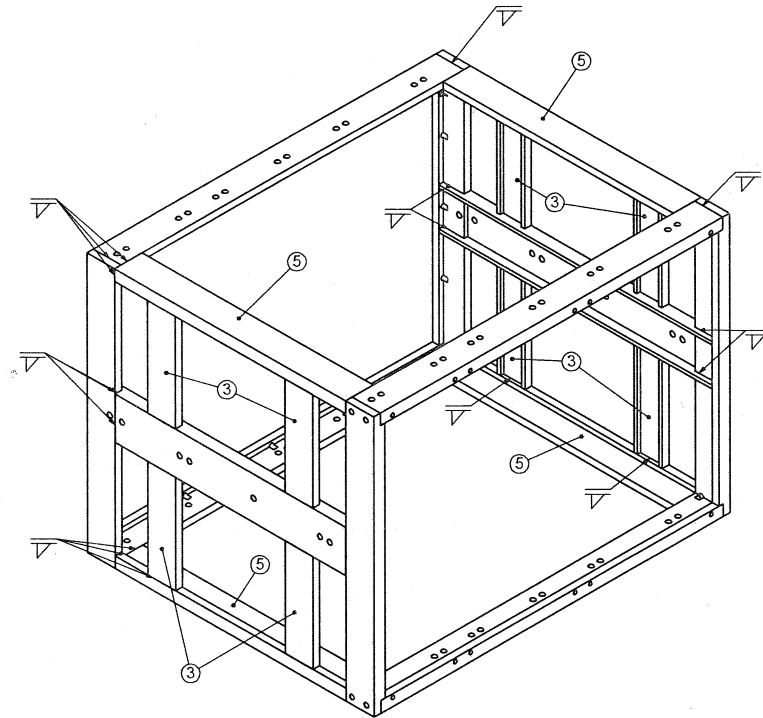
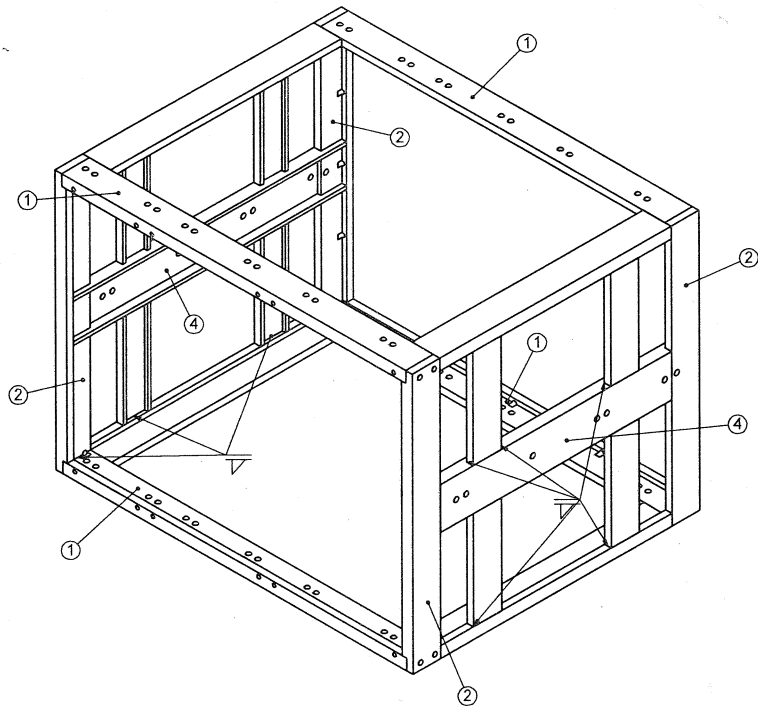


ITEM NO	DESCRIPTION	QTY
1	313 	4
2	238 	4
3	90 	8
4	249 	2
5	211 	4

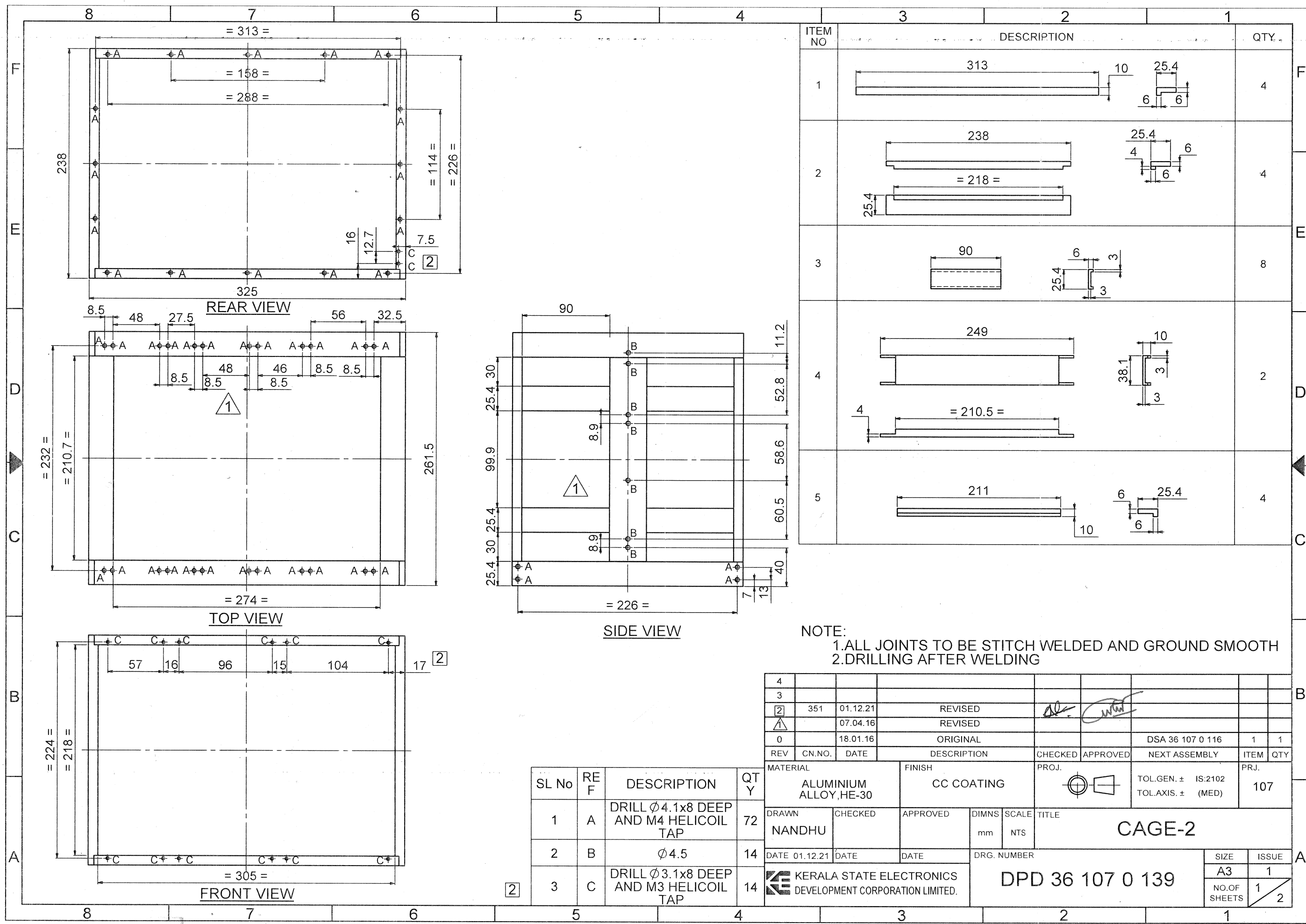
NOTE:
 1. ALL JOINTS TO BE STITCH WELDED AND GROUND SMOOTH
 2. DRILLING AFTER WELDING

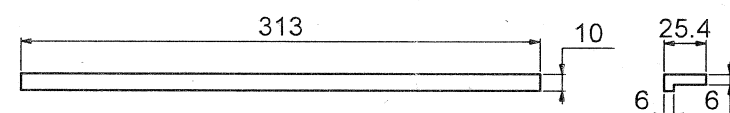
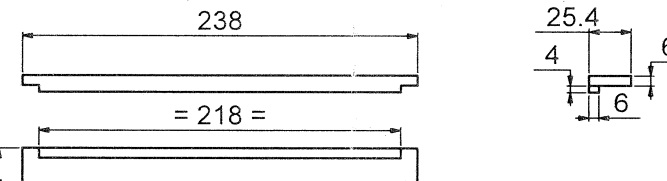
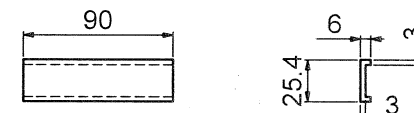
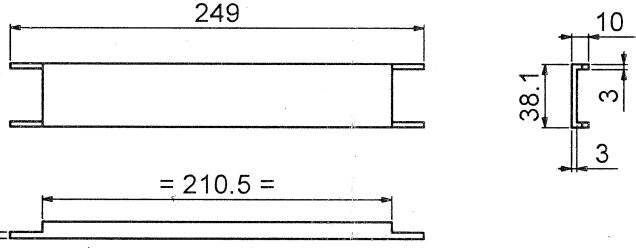
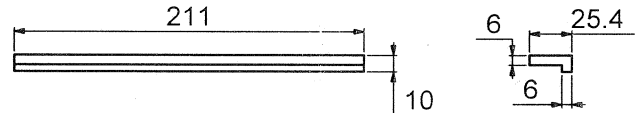
SL No	REF	DESCRIPTION	QTY
1	A	DRILL Ø4.1x8 DEEP AND M4 HELICOIL TAP	72
2	B	Ø4.5	14
3	C	DRILL Ø3.1x8 DEEP AND M3 HELICOIL TAP	14

4									
3									
2									
1	351	01.12.21	REVISED						
0		18.01.16	ORIGINAL				DSA 36 107 0 115	1	1
REV	CN.NO.	DATE	DESCRIPTION	CHECKED	APPROVED	NEXT ASSEMBLY	ITEM	QTY	
MATERIAL			FINISH		PROJ.	TOL.GEN. ± IS:2102		PRJ.	
ALUMINIUM ALLOY, HE30			CC COATING			TOL.AXIS ± (MED)		107	
DRAWN		CHECKED		APPROVED		DIMNS		SCALE	
NANDHU						mm		NTS	
DATE 01.12.21		DATE		DATE		DRG. NUMBER		TITLE	
						DPD 36 107 0 138		CAGE-1	
KERALA STATE ELECTRONICS DEVELOPMENT CORPORATION LIMITED							SIZE		ISSUE
							A3		1
							NO. OF SHEETS		2



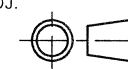
4													
3													
2													
△	351	01.12.21		REVISED									
0		18.01.16		ORIGINAL									
REV	CN.NO.	DATE		DESCRIPTION	CHECKED	APPROVED		NEXT ASSEMBLY	ITEM	QTY			
MATERIAL				FINISH	PROJ.			TOL.GEN. ± IS:2102	PRJ.				
ALUMINIUM ALLOY HE-30				CC COATING				TOL.AXIS. ± (MED)	107				
DRAWN	CHECKED	APPROVED	DIMNS	SCALE	TITLE								
NANDHU			mm	NTS	CAGE-1								
DATE	01.12.21	DATE	DATE	DRG. NUMBER					SIZE	ISSUE			
									A4	1			
				KERALA STATE ELECTRONICS DEVELOPMENT CORPORATION LIMITED.				DPD 36 107 0 138		NO. OF SHEETS	2		
										2			



ITEM NO	DESCRIPTION	QTY.
1		4
2		4
3		8
4		2
5		4

NOTE:
 1. ALL JOINTS TO BE STITCH WELDED AND GROUND SMOOTH
 2. DRILLING AFTER WELDING

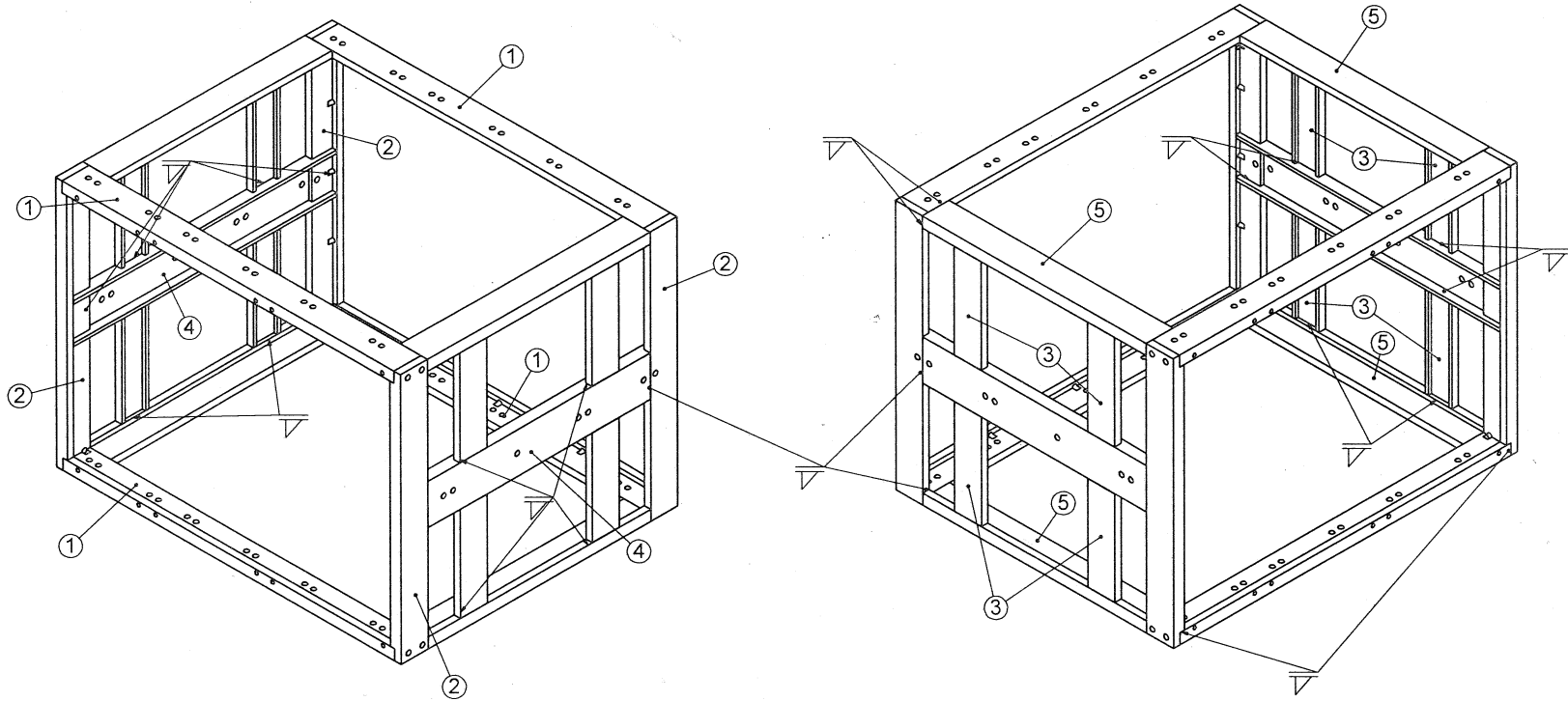
REV	CN.NO.	DATE	DESCRIPTION	CHECKED	APPROVED	NEXT ASSEMBLY	ITEM	QTY
4								
3								
2	351	01.12.21	REVISED					
1		07.04.16	REVISED					
0		18.01.16	ORIGINAL			DSA 36 107 0 116	1	1

MATERIAL	FINISH	PROJ.	TOL.GEN. ±	IS:2102	PRJ.
ALUMINIUM ALLOY, HE-30	CC COATING		TOL.AXIS. ±	(MED)	107
DRAWN	CHECKED	APPROVED	DIMNS	SCALE	TITLE
NANDHU			mm	NTS	CAGE-2
DATE	DATE	DATE	DRG. NUMBER		SIZE
01.12.21			DPD 36 107 0 139		A3
KERALA STATE ELECTRONICS DEVELOPMENT CORPORATION LIMITED.					ISSUE
					1
					NO.OF SHEETS
					1
					2

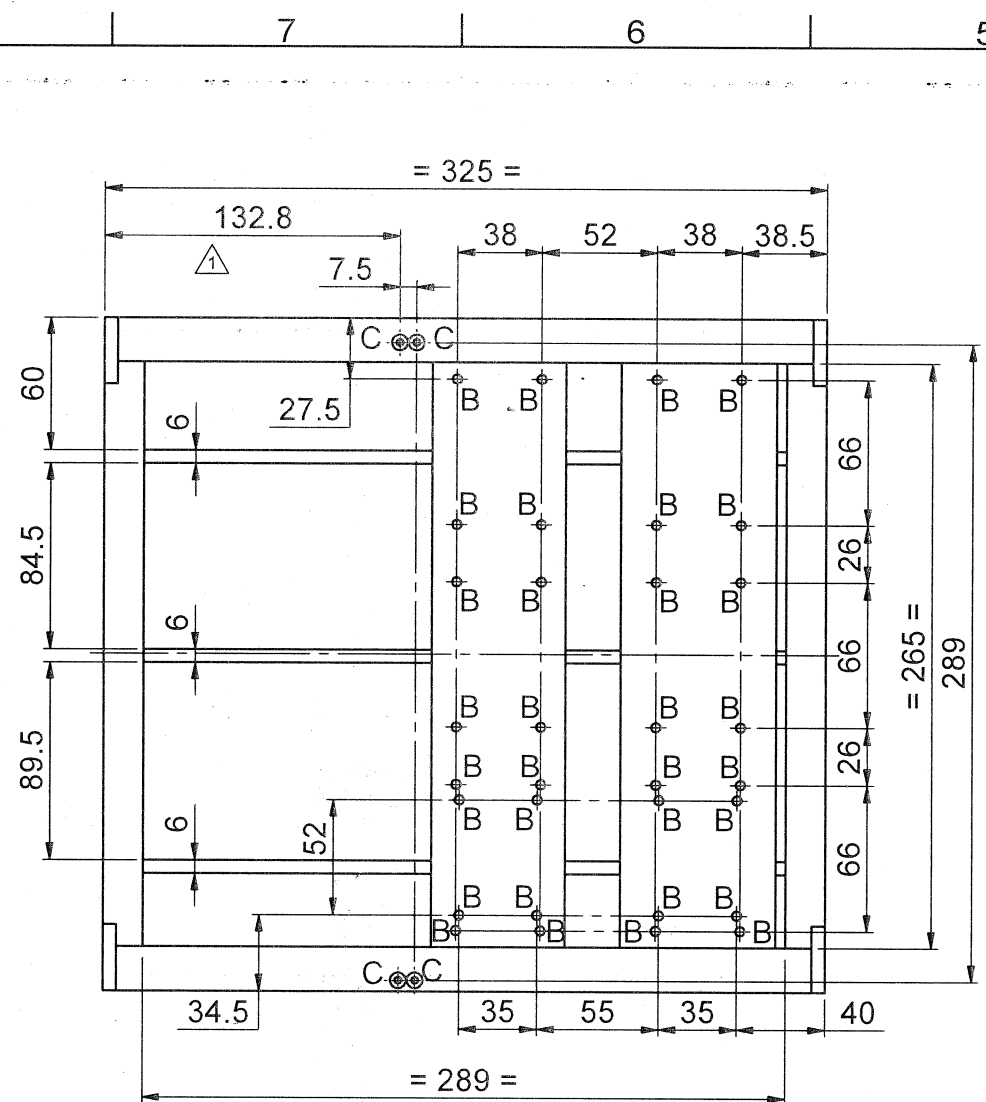
SL No	RE F	DESCRIPTION	QTY
1	A	DRILL Ø4.1x8 DEEP AND M4 HELICOIL TAP	72
2	B	Ø4.5	14
3	C	DRILL Ø3.1x8 DEEP AND M3 HELICOIL TAP	14

MASTER DOCUMENT

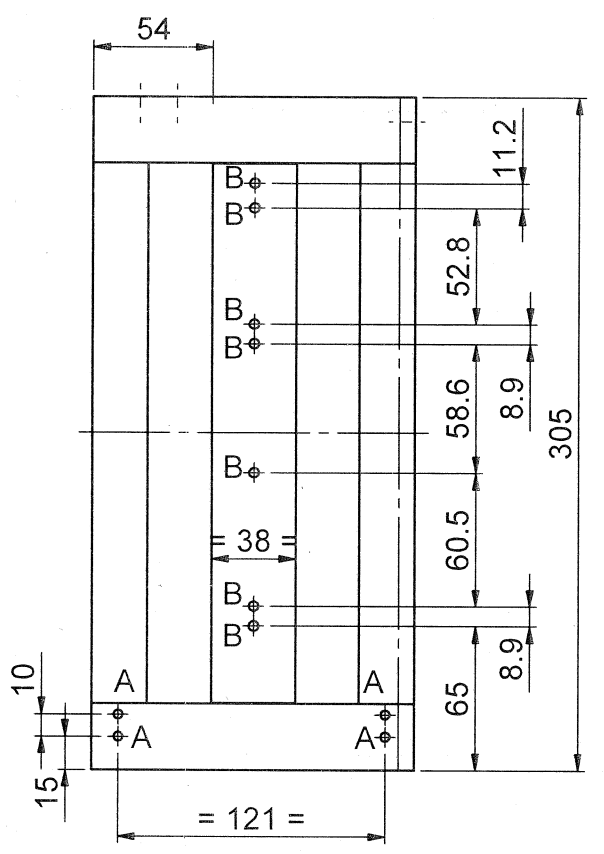
MASTER DOCUMENT



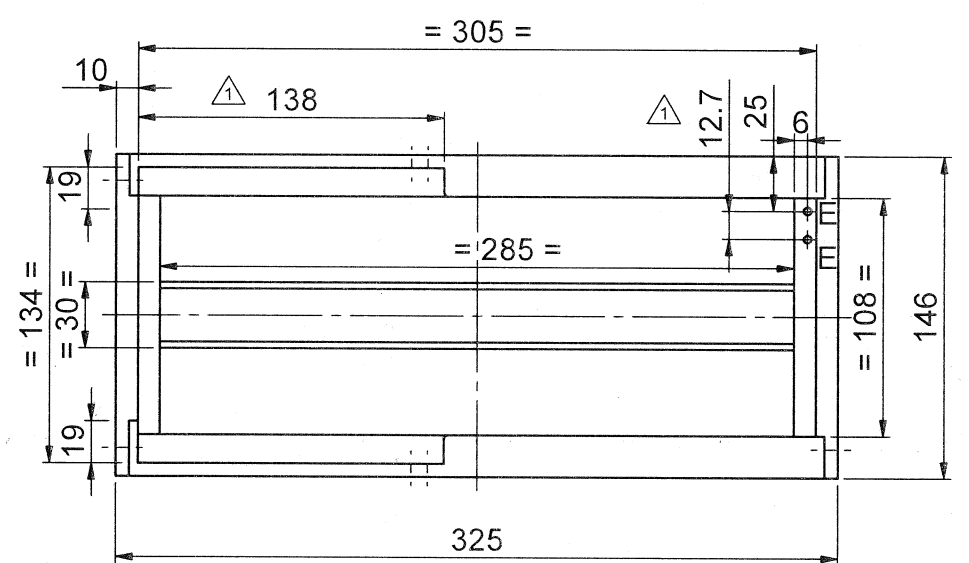
4										
3										
2	351	01.12.21		REVISED						
1		07.04.16		REVISED						
0		18.01.16		ORIGINAL						
REV	CN.NO.	DATE		DESCRIPTION	CHECKED	APPROVED		NEXT ASSEMBLY	ITEM	QTY
MATERIAL				FINISH	PROJ.			TOL.GEN. ± IS:2102	PRJ.	
ALUMINIUM ALLOY HE-30				CC COATING				TOL.AXIS. ± (MED)	107	
DRAWN	CHECKED	APPROVED	DIMNS	SCALE	TITLE					
NANDHU			mm	NTS	CAGE-2					
DATE 01.12.21	DATE	DATE	DRG. NUMBER			SIZE		ISSUE		
			DPD 36 107 0 139			A4		1		
KERALA STATE ELECTRONICS DEVELOPMENT CORPORATION LIMITED.						NO.OF SHEETS		2 / 2		



TOP VIEW



SIDE VIEW



FRONT VIEW

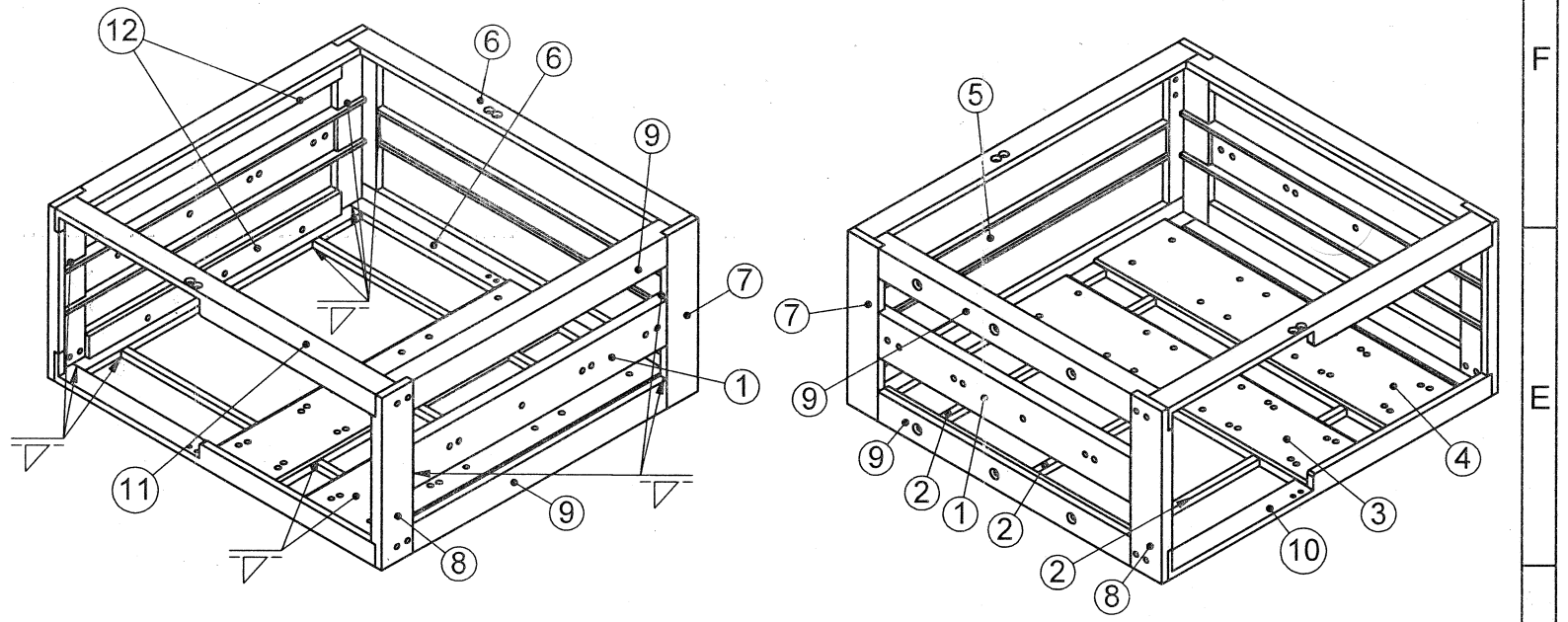
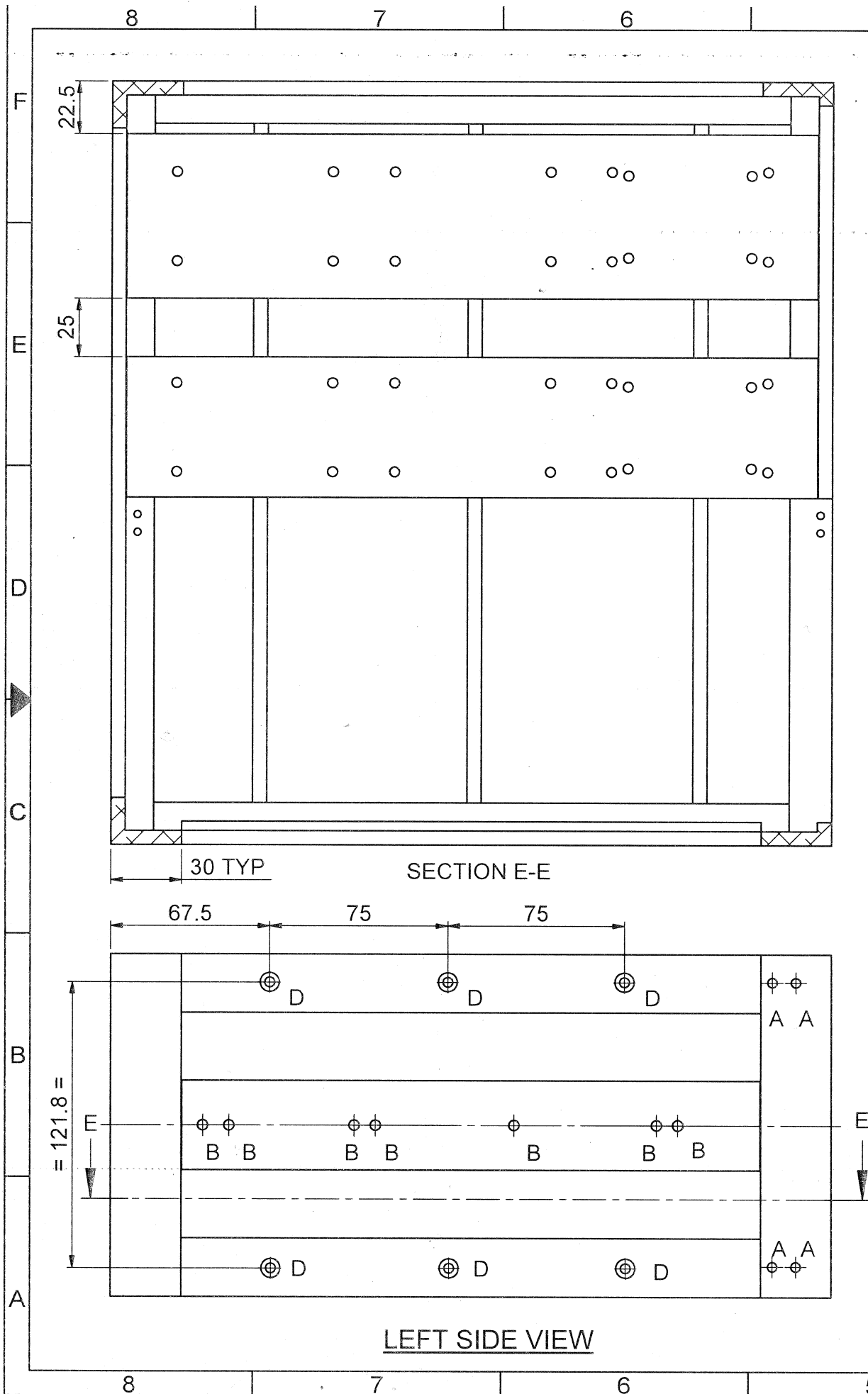
NOTE:
 1. ALL JOINTS TO BE STITCH WELDED AND GROUND SMOOTH
 2. DRILLING AFTER WELDING

ITEM NO	DESCRIPTION	QTY
1		2
2		3
3		1
4		1
5		1
6		2
7		2
8		2
9		4

SL No	REF	DESCRIPTION	QTY
1	A	DRILL $\phi 4.1 \times 8$ DEEP AND M4 HELICOIL TAP	8
2	B	$\phi 4.5$	46
3	C	$\phi 3.5$ CSK TO $\phi 6.2$	8
4	D	$\phi 4.2$ CSK TO $\phi 8.2$	6
5	E	$\phi 3.5$	2

4										
3										
2										
1	351	01.12.21	REVISED							
0		18.01.16	ORIGINAL							
REV	CN.NO.	DATE	DESCRIPTION	CHECKED	APPROVED	PROJ.	DSG	SA	ISS	QTY
MATERIAL			FINISH			PROJ.		TOL.GEN. \pm IS:2102		PRJ.
ALUMINIUM ALLOY HE-30			CC COATING					TOL.AXIS. \pm (MED)		107
DRAWN		CHECKED	APPROVED	DIMNS	SCALE	TITLE				
NANDHU				mm	NTS	CAGE-3				
DATE 01.12.21		DATE	DATE	DRG. NUMBER						
KERALA STATE ELECTRONICS DEVELOPMENT CORPORATION LIMITED.		DPD 36 107 0 148		SIZE	ISSUE					
				A3	1					
				NO.OF SHEETS	1					
					2					

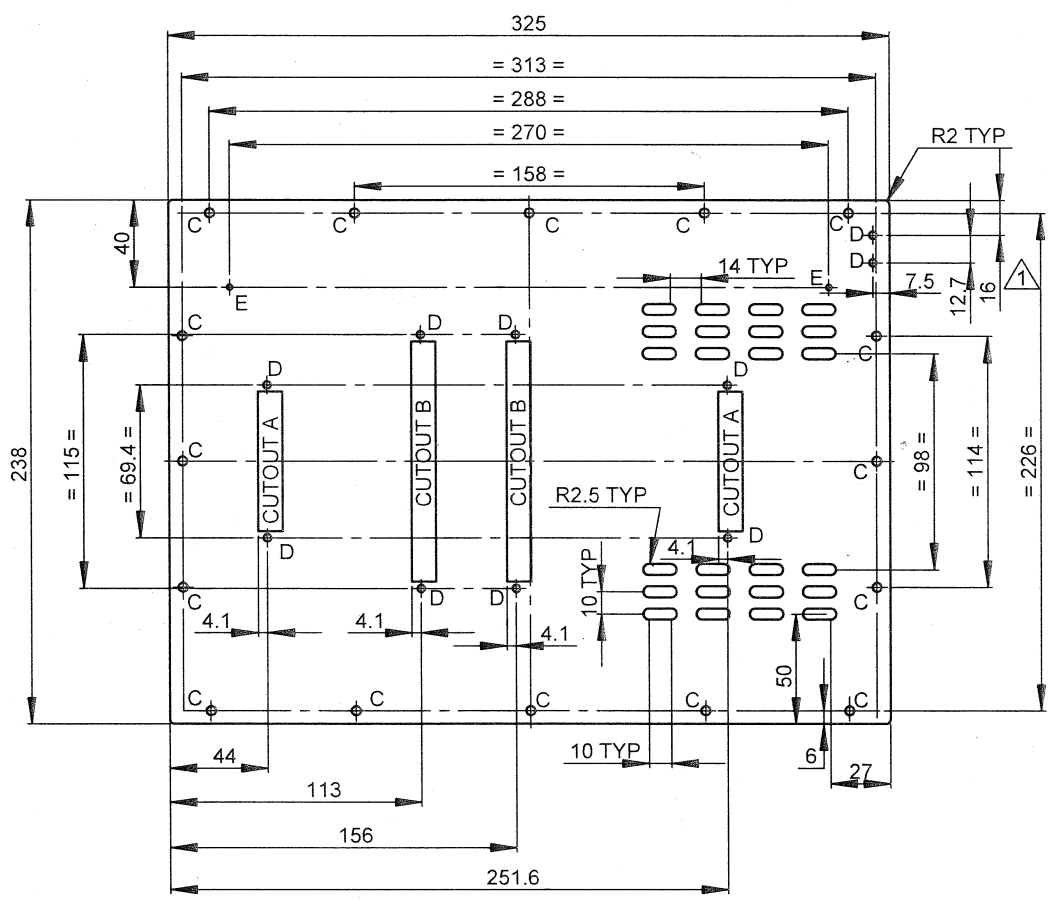
MASTER DOCUMENT



ITEM NO	DESCRIPTION		QTY				
10			1				
11			1				
12			2				
4							
3							
2							
Δ	351	01.12.21	REVISED				
0		18.01.16	ORIGINAL			DSA 36 107 0 119	1 1
REV	CN.NO.	DATE	DESCRIPTION	CHECKED	APPROVED	NEXT ASSEMBLY	ITEM QTY
MATERIAL		FINISH		PROJ.		PRJ.	
ALUMINIUM ALLOY HE-30		CC COATING				TOL.GEN. ± IS:2102 TOL.AXIS. ± (MED)	
DRAWN	CHECKED	APPROVED	DIMNS	SCALE	TITLE		
NANDHU			mm	NTS	CAGE-3		
DATE	DATE	DATE	DRG. NUMBER			SIZE	ISSUE
01.12.21			DPD 36 107 0 148			A3	1
KERALA STATE ELECTRONICS DEVELOPMENT CORPORATION LIMITED.						NO.OF SHEETS	2
							2

MASTER DOCUMENT

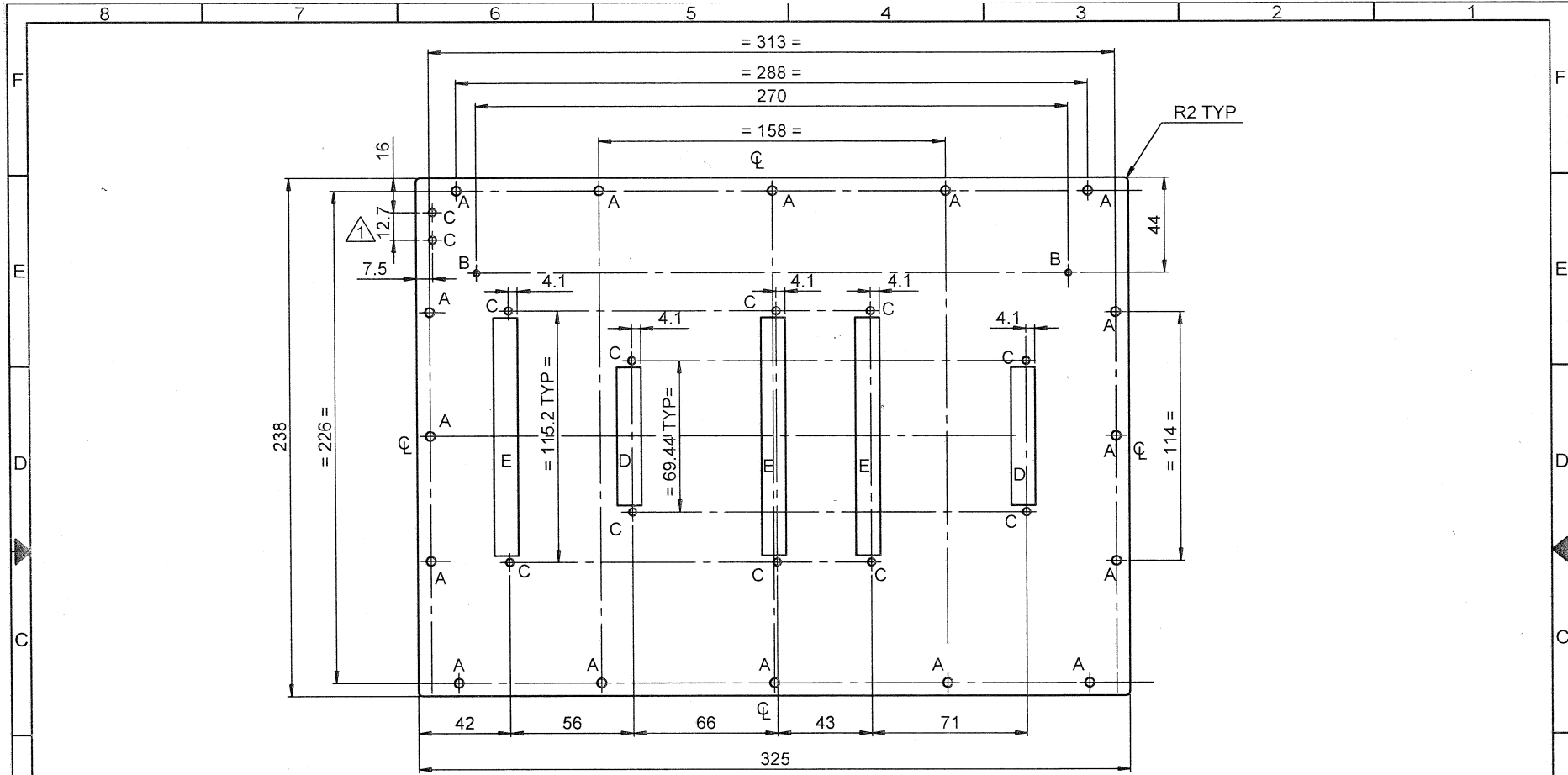
MASTER DOCUMENT



SL No	REF	DESCRIPTION	QTY
1	A	63.4x11	2
2	B	109x11	2
3	C	Ø 4.2	16
4	D	Ø 3.5	10
5	E	DRILL Ø 1.6 AND M2 TAP	2

4									
3									
2									
△	351	01.12.21	REVISED						
0		18.01.16	ORIGINAL			DSA 36 107 0 115	11	1	
REV	CN.NO.	DATE	DESCRIPTION	CHECKED	APPROVED	NEXT ASSEMBLY	ITEM	QTY	
MATERIAL		FINISH		PROJ.		TOL.GEN. ±		PRJ.	
3 THICK ALUMINIUM SHEET, AL 5052 H32		CC COATING				IS:2102		107	
TOL.AXIS. ± (MED)									
DRAWN	CHECKED	APPROVED	DIMMS	SCALE	TITLE				
NANDHU			mm	NTS	CONNECTOR MOUNTING PLATE-1				
DATE	01.12.21	DATE	DATE	DRG. NUMBER	SIZE	ISSUE			
					A4	1			
KERALA STATE ELECTRONICS DEVELOPMENT CORPORATION LIMITED.					DPD 36 107 0 131		NO.OF SHEETS		1

MASTER DOCUMENT

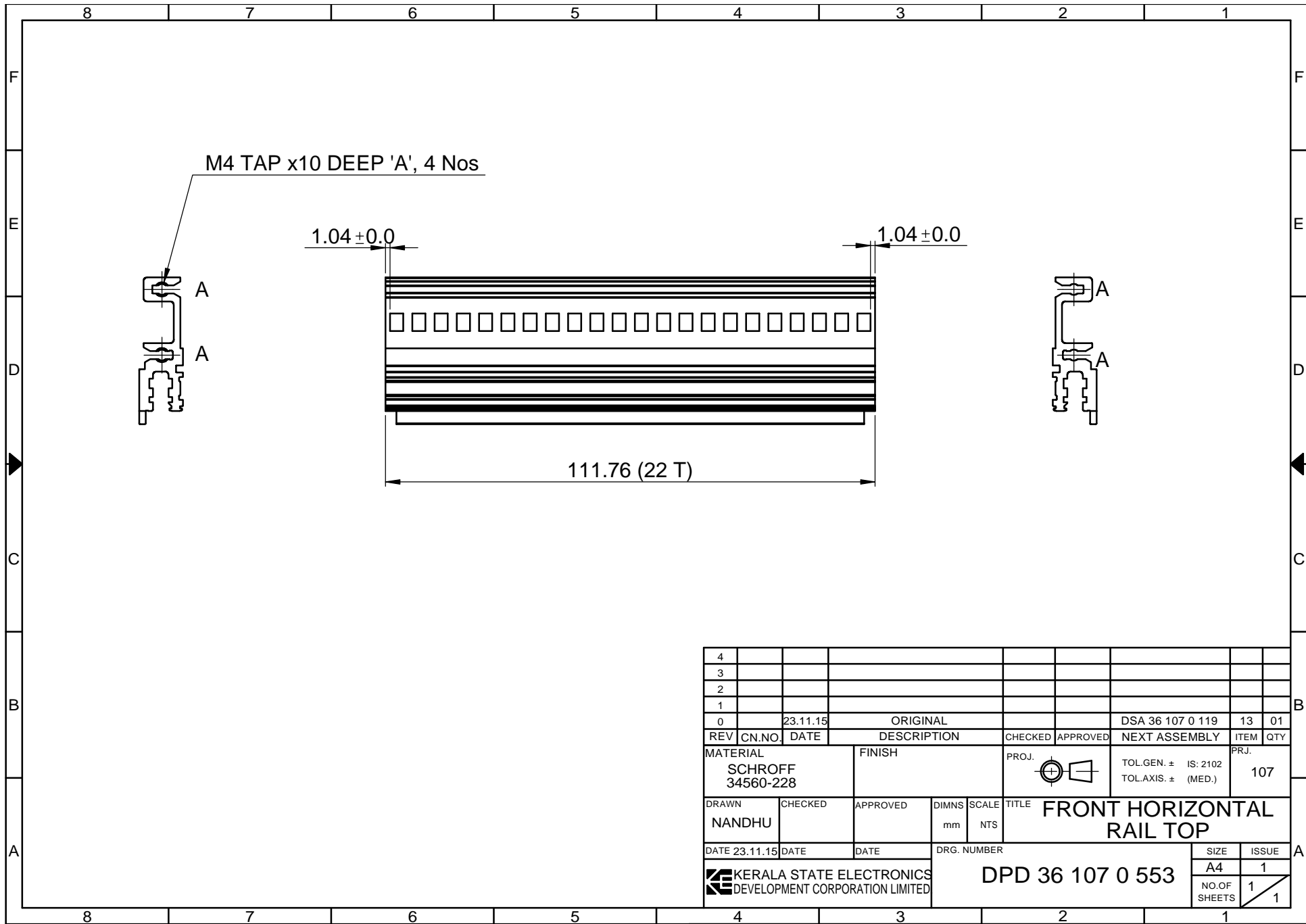


NOTE:
AVOID SHARP CORNERS AND EDGES

SL NO	REF	DESCRIPTION	QTY
1	A	Ø4.2 HOLES	16
2	B	DRILL Ø1.6 AND M2 TAP	2
3	C	Ø3.5 HOLES	12
4	D	CUTOUT 63.4X11	2
5	E	CUTOUT 109X11	3



4											
3											
2											
1	351	01.12.21	REVISED								
0	18.01.18		ORIGINAL					DSA 36 107 0 116	11	1	
REV	CN.NO.	DATE	DESCRIPTION	CHECKED	APPROVED	PROJ.	NEXT ASSEMBLY	ITEM	QTY		
MATERIAL			FINISH	PROJ.			TOL.GEN. ± IS:2102		PRJ.		
3 THICK ALUMINIUM SHEET, AL 5052 H32			CC COATING				TOL.AXIS. ± (MED)		107		
DRAWN	CHECKED	APPROVED	DIMNS	SCALE	TITLE						
NANDHU			mm	NTS	CONNECTOR MOUNTING PLATE-2						
DATE	01.12.21	DATE	DATE	DRG. NUMBER			SIZE		ISSUE		
				KERALA STATE ELECTRONICS DEVELOPMENT CORPORATION LIMITED.			DPD 36 107 0 132		A4		1
							NO. OF SHEETS		1		



4													
3													
2													
1													
0		23.11.15		ORIGINAL				DSA 36 107 0 119	13	01			
REV	CN.NO.	DATE	DESCRIPTION			CHECKED	APPROVED	NEXT ASSEMBLY	ITEM	QTY			
MATERIAL			FINISH			PROJ.		TOL.GEN. ± IS: 2102		PRJ.			
SCHROFF								TOL.AXIS. ± (MED.)		107			
DRAWN		CHECKED		APPROVED		DIMNS	SCALE	TITLE					
NANDHU						mm	NTS	FRONT HORIZONTAL RAIL TOP					
DATE 23.11.15		DATE		DATE		DRG. NUMBER			SIZE		ISSUE		
						DPD 36 107 0 553			A4		1		
									NO.OF SHEETS		1		
											1		

KERALA STATE ELECTRONICS DEVELOPMENT CORPORATION LIMITED