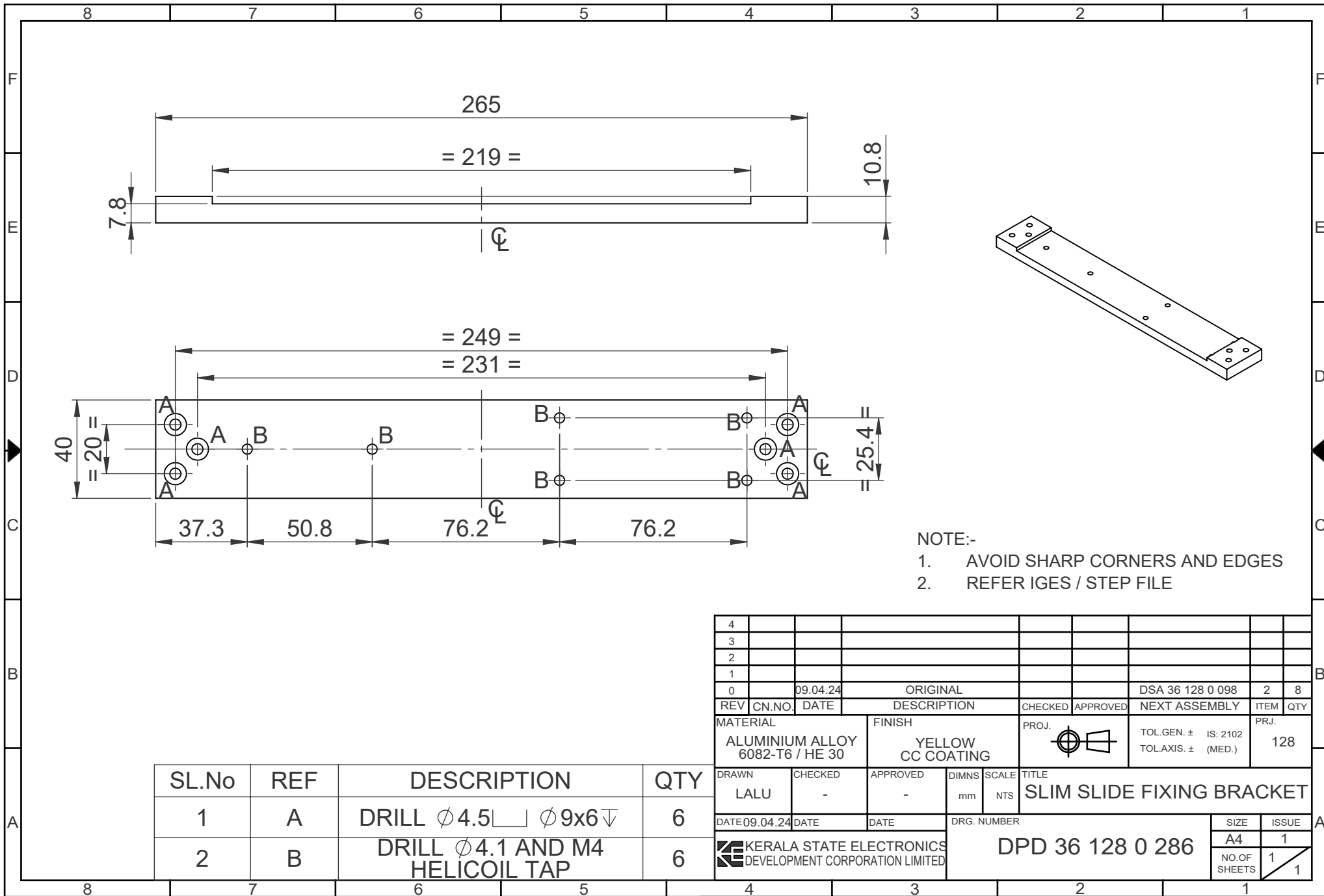


RESTRICTED

RESTRICTED



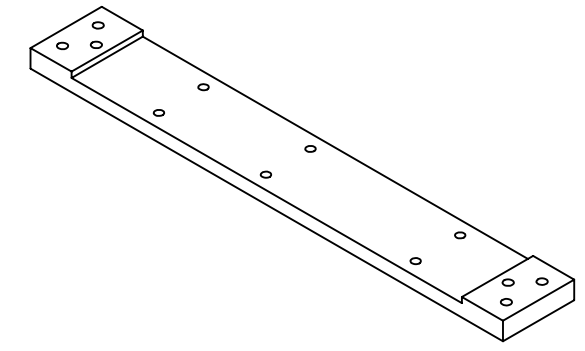
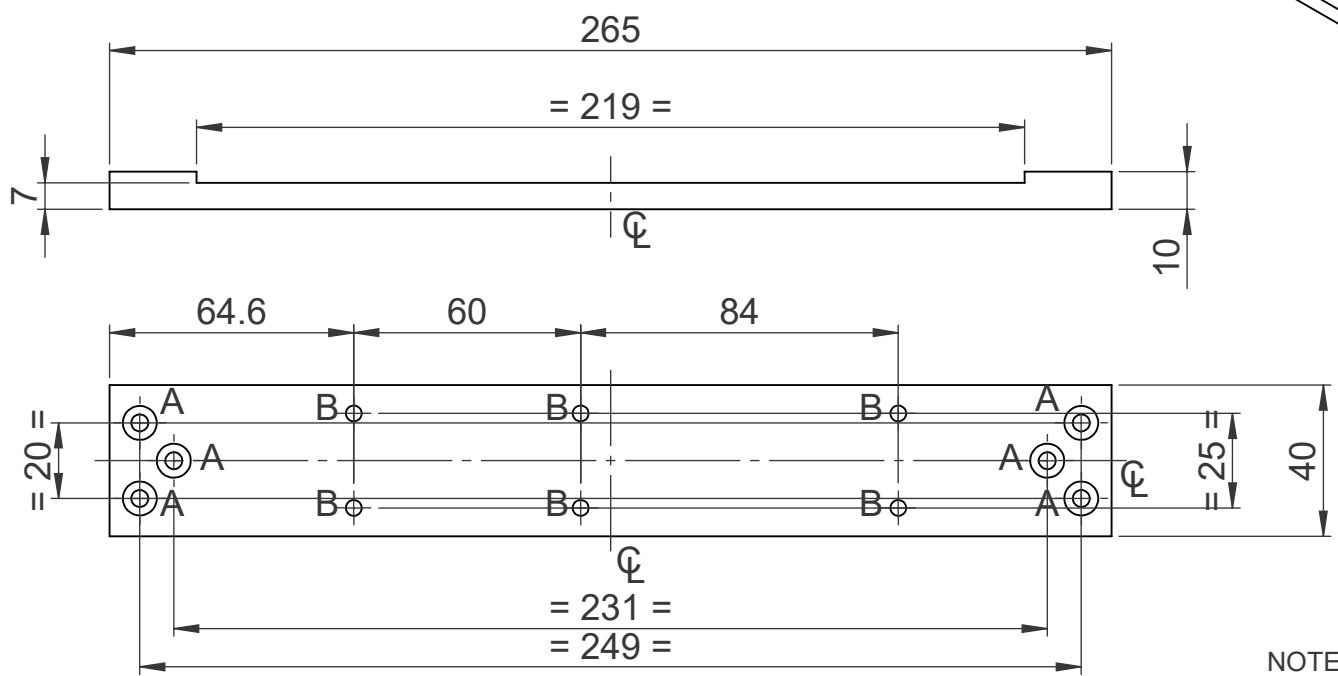
- NOTE:-
1. AVOID SHARP CORNERS AND EDGES
 2. REFER IGES / STEP FILE

4									
3									
2									
1									
0	09.04.24		ORIGINAL			DSA 36 128 0 098	2	8	
REV	CN.NO.	DATE	DESCRIPTION	CHECKED	APPROVED	NEXT ASSEMBLY	ITEM	QTY	
MATERIAL			FINISH	PROJ.		TOL.GEN. ± IS: 2102	PRJ.		
ALUMINIUM ALLOY 6082-T6 / HE 30			YELLOW CC COATING			TOL.AXIS. ± (MED.)	128		
DRAWN	CHECKED	APPROVED	DIMNS	SCALE	TITLE				
LALU	-	-	mm	NTS	SLIM SLIDE FIXING BRACKET				
DATE	DATE	DATE	DRG. NUMBER			SIZE	ISSUE		
09.04.24			DPD 36 128 0 286			A4	1		
						NO.OF SHEETS	1		
							1		

SL.No	REF	DESCRIPTION	QTY
1	A	DRILL $\phi 4.5$ \square $\phi 9 \times 6$ ∇	6
2	B	DRILL $\phi 4.1$ AND M4 HELICOIL TAP	6

RESTRICTED

RESTRICTED



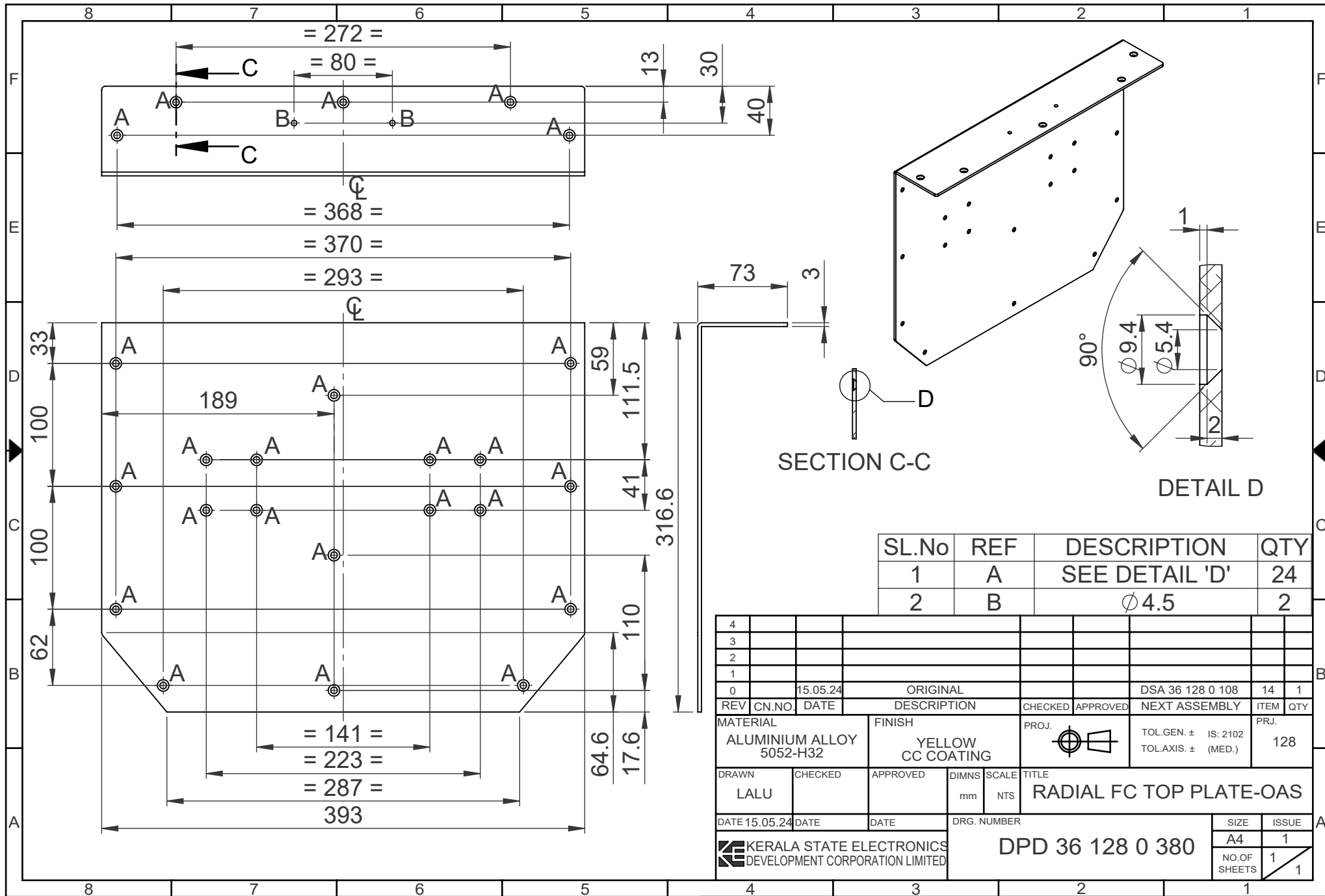
- NOTE:-
1. AVOID SHARP CORNERS AND EDGES
 2. REFER IGES / STEP FILE

SL.No	REF	DESCRIPTION	QTY
1	A	DRILL $\phi 4.5$ \square $\phi 9 \times 6$ ∇	6
2	B	DRILL $\phi 4.1$ AND M4 HELICOIL TAP	6

4									
3									
2									
1									
0	09.04.24	ORIGINAL				DSA 36 128 0 098	9	16	
REV	CN.NO.	DATE	DESCRIPTION	CHECKED	APPROVED	NEXT ASSEMBLY	ITEM	QTY	
MATERIAL		FINISH		PROJ.		TOL.GEN. \pm IS: 2102		PRJ.	
ALUMINIUM ALLOY 6082-T6/HE30		YELLOW CC COATING				TOL.AXIS. \pm (MED.)		128	
DRAWN	CHECKED	APPROVED	DIMNS	SCALE	TITLE				
LALU	-	-	mm	NTS	SLIM SLIDE FIXING BRACKET-OAS PA CARD CAGE				
DATE	DATE	DATE	DRG. NUMBER		DPD 36 128 0 287		SIZE	ISSUE	
09.04.24							A4	1	
							NO.OF SHEETS	1	
							1		

RESTRICTED

RESTRICTED



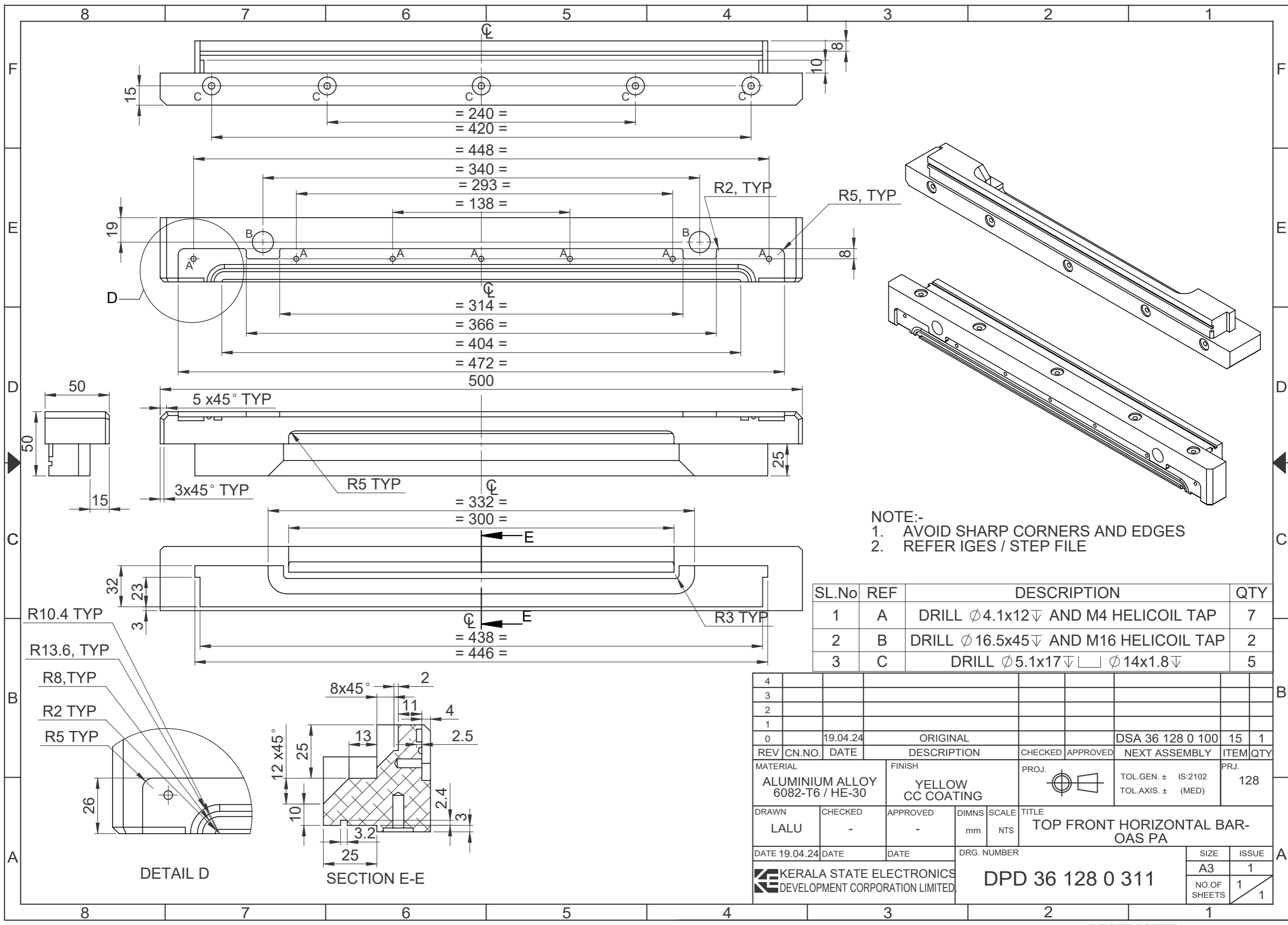
SL.No	REF	DESCRIPTION	QTY
1	A	SEE DETAIL 'D'	24
2	B	∅4.5	2

4									
3									
2									
1									
0	15.05.24	ORIGINAL			DSA 36 128 0 108	14	1		
REV	CN.NO.	DATE	DESCRIPTION	CHECKED	APPROVED	NEXT ASSEMBLY	ITEM	QTY	

MATERIAL	FINISH	PROJ.	PRJ.
ALUMINIUM ALLOY 5052-H32	YELLOW CC COATING		128
		TOL.GEN. ± IS: 2102	TOL.AXIS. ± (MED.)

DRAWN	CHECKED	APPROVED	DIMNS	SCALE	TITLE
LALU			mm	NTS	RADIAL FC TOP PLATE-OAS

DATE 15.05.24	DATE	DATE	DRG. NUMBER	SIZE	ISSUE
			DPD 36 128 0 380	A4	1
KERALA STATE ELECTRONICS DEVELOPMENT CORPORATION LIMITED				NO.OF SHEETS	1
					1



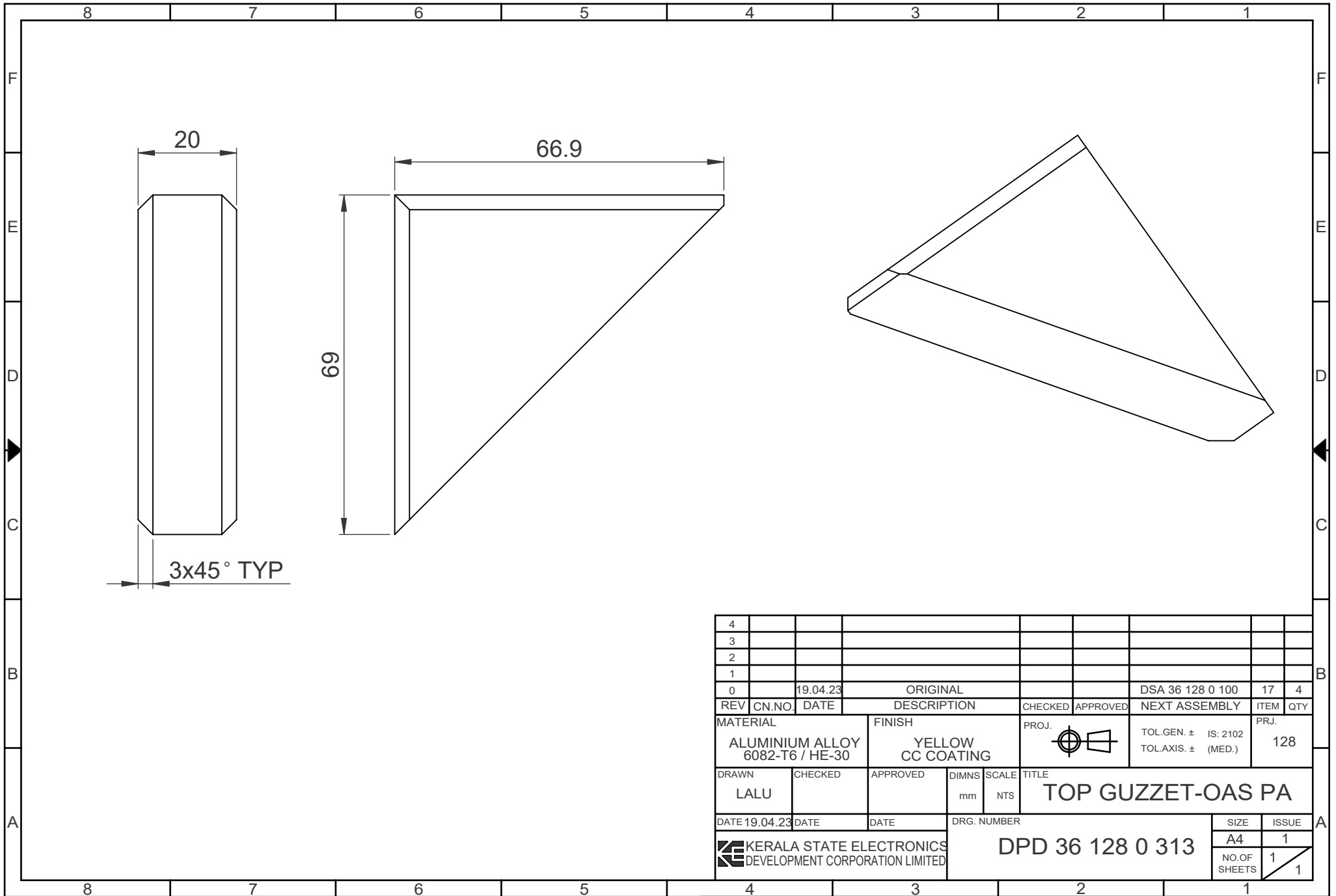
NOTE:-
 1. AVOID SHARP CORNERS AND EDGES
 2. REFER IGES / STEP FILE

SL.No	REF	DESCRIPTION	QTY
1	A	DRILL $\phi 4.1 \times 12 \nabla$ AND M4 HELICOIL TAP	7
2	B	DRILL $\phi 16.5 \times 45 \nabla$ AND M16 HELICOIL TAP	2
3	C	DRILL $\phi 5.1 \times 17 \nabla \square$ $\phi 14 \times 1.8 \nabla$	5

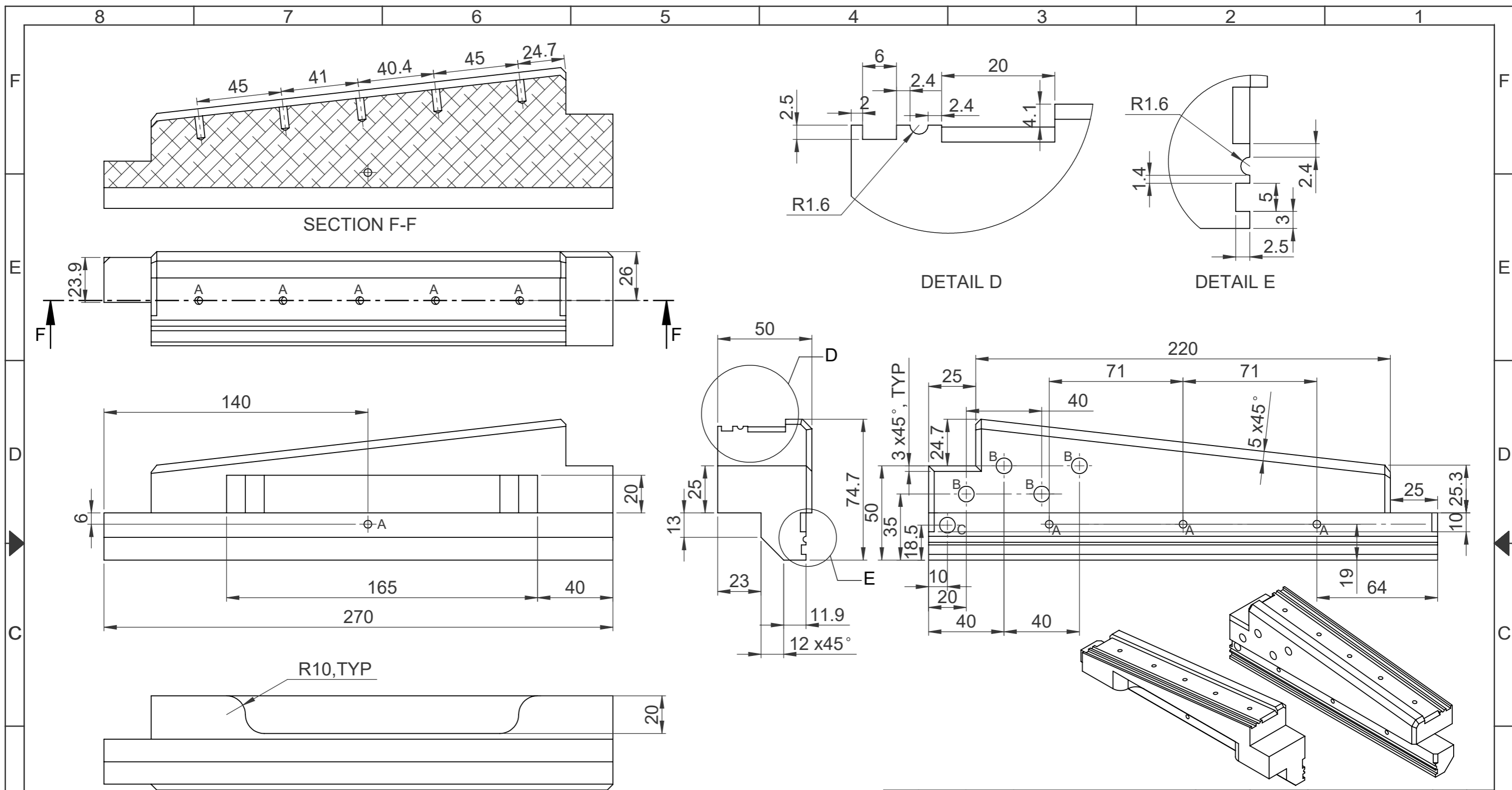
4									
3									
2									
1									
0	19.04.24	ORIGINAL				DSA 36 128 0 100	15	1	
REV	CN.NO.	DATE	DESCRIPTION	CHECKED	APPROVED	NEXT ASSEMBLY	ITEM	QTY	
MATERIAL		FINISH		PROJ.		TOL.GEN. \pm		IS:2102	
ALUMINIUM ALLOY 6082-T6 / HE-30		YELLOW CC COATING				TOL.AXIS. \pm		(MED)	
DRAWN LALU		CHECKED -		APPROVED -		DIMNS mm		SCALE NTS	
DATE 19.04.24		DATE		DATE		DRG. NUMBER		TITLE	
KERALA STATE ELECTRONICS DEVELOPMENT CORPORATION LIMITED.		DPD 36 128 0 311		SIZE A3		ISSUE 1			
						NO.OF SHEETS 1		1	

RESTRICTED

RESTRICTED



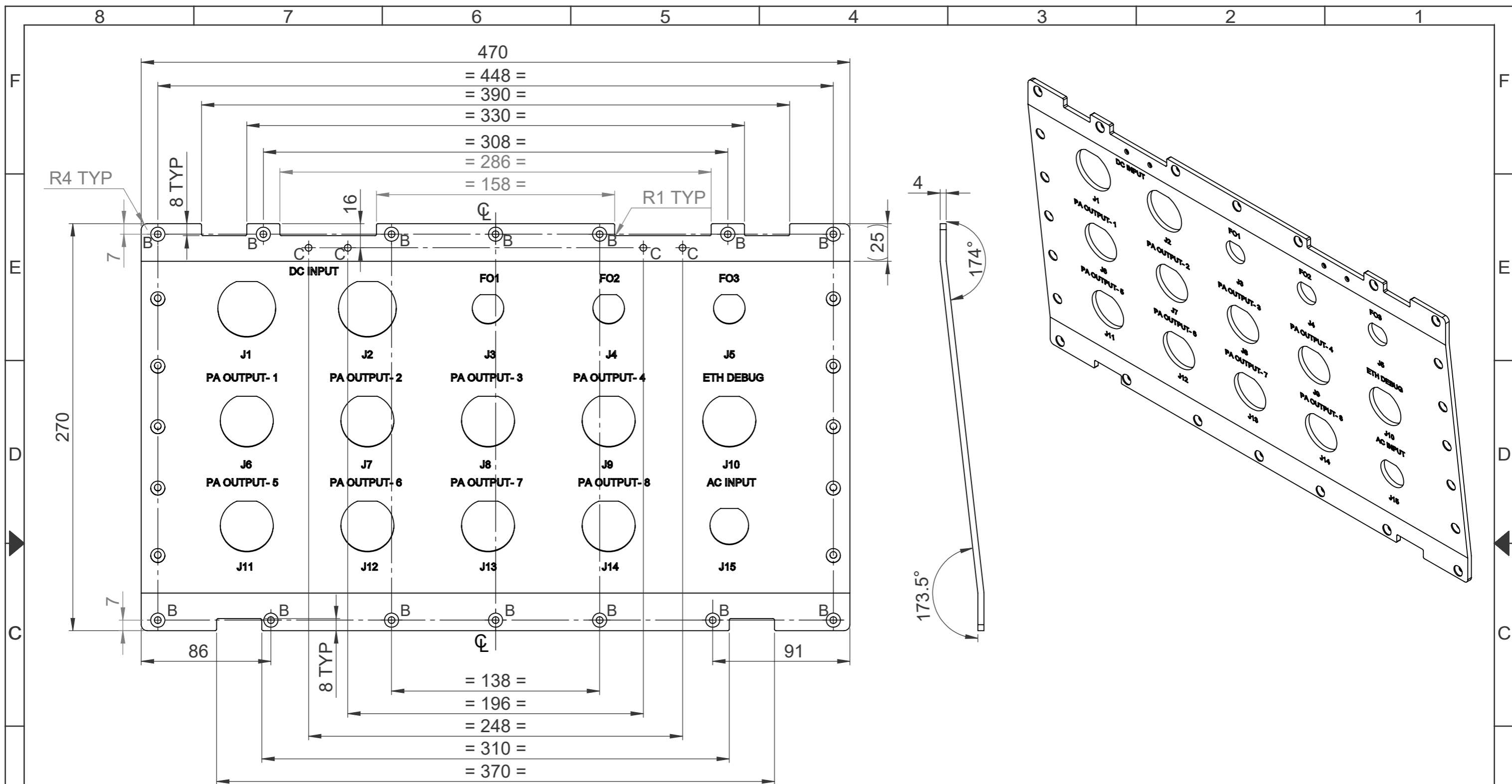
4										
3										
2										
1										
0		19.04.23		ORIGINAL				DSA 36 128 0 100	17	4
REV	CN.NO.	DATE	DESCRIPTION			CHECKED	APPROVED	NEXT ASSEMBLY	ITEM	QTY
MATERIAL		FINISH		PROJ.		TOL.GEN. ± IS: 2102		PRJ.		
ALUMINIUM ALLOY 6082-T6 / HE-30		YELLOW CC COATING				TOL.AXIS ± (MED.)		128		
DRAWN	CHECKED	APPROVED	DIMNS	SCALE	TITLE					
LALU			mm	NTS	TOP GUZZET-OAS PA					
DATE 19.04.23	DATE	DATE	DRG. NUMBER			SIZE		ISSUE		
			DPD 36 128 0 313			A4		1		
						NO.OF SHEETS		1		
								1		



NOTE:-
 1. AVOID SHARP CORNERS AND EDGES
 2. REFER IGES / STEP FILE

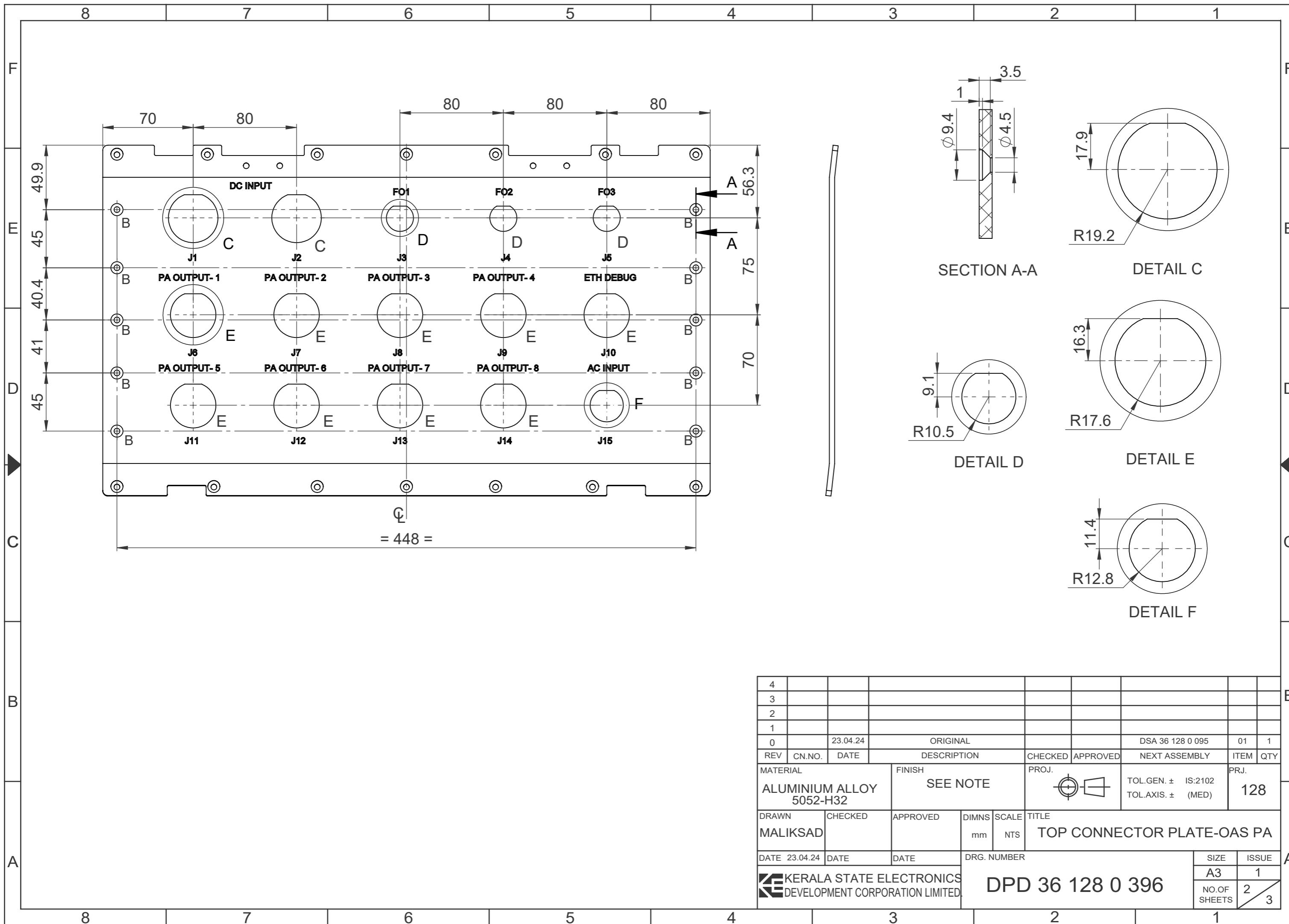
SL.No	REF	DESCRIPTION	QTY
1	A	DRILL $\phi 4.1 \times 12 \nabla$ AND M4 HELICOIL TAP	9
2	B	DRILL $\phi 8.3 \times 23 \nabla$ AND M8 HELICOIL TAP	4
3	C	DRILL $\phi 8.3 \times 20 \nabla$ AND M8 HELICOIL TAP	1

4										
3										
2										
1										
0	19.04.24	ORIGINAL						DSA 36 128 0 100	13	1
REV	CN.NO.	DATE	DESCRIPTION	CHECKED	APPROVED	NEXT ASSEMBLY	ITEM	QTY		
MATERIAL		FINISH		PROJ.		TOL.GEN. \pm IS:2102		PRJ.		
ALUMINIUM ALLOY 6082-T6 / HE-30		YELLOW CC COATING				TOL.AXIS. \pm (MED)		128		
DRAWN	CHECKED	APPROVED	DIMNS	SCALE	TITLE					
LALU	-	-	mm	NTS	TOP LEFT HORIZONTAL BAR-OAS PA					
DATE 19.04.24	DATE	DATE	DRG. NUMBER							
					DPD 36 128 0 309					
					SIZE	ISSUE				
					A3	1				
					NO.OF SHEETS	1				
						1				



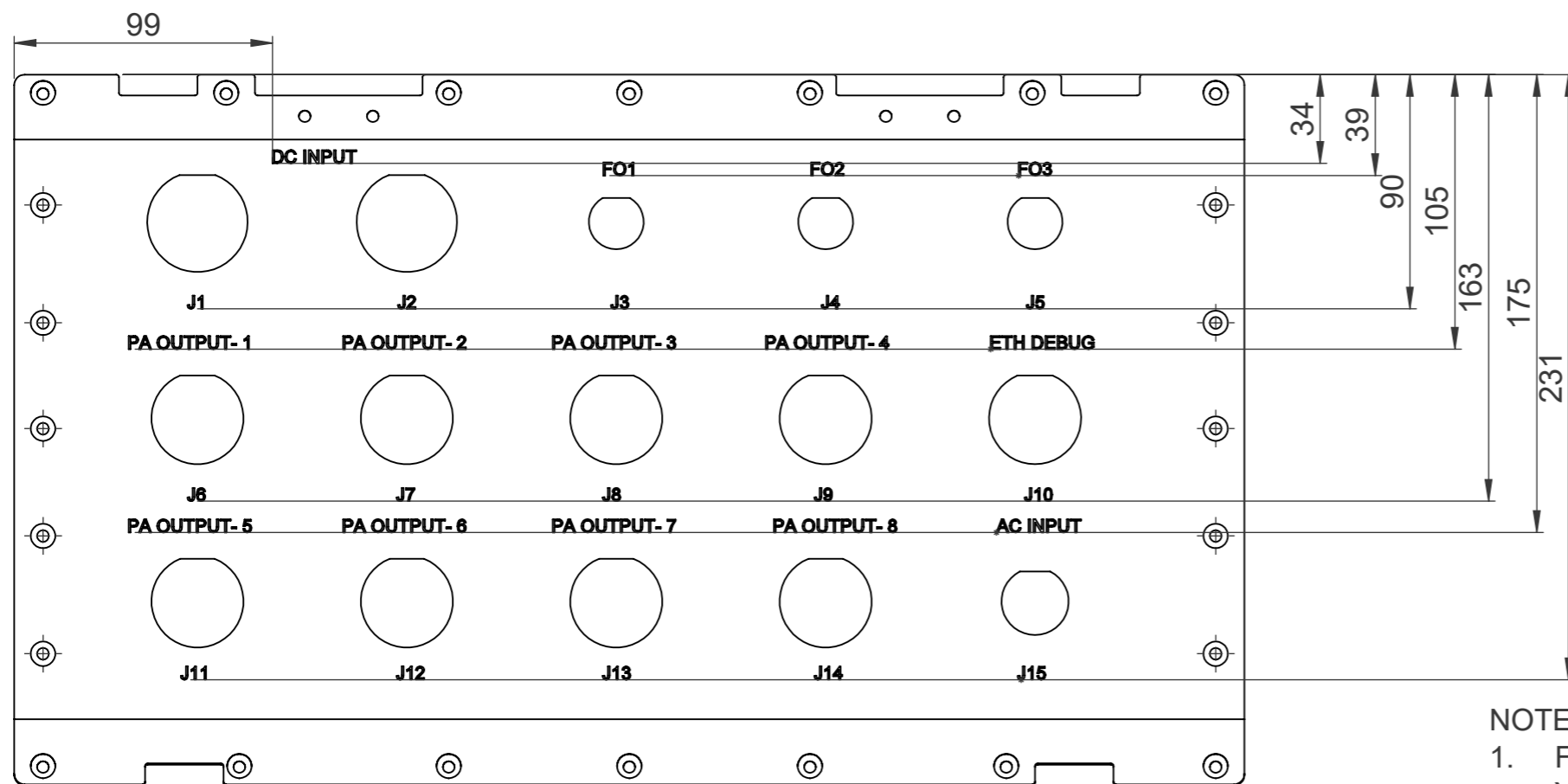
SLNO	REF	DESCRIPTION	QTY
1	B	REFER SECTION A-A	24
2	C	REFER DETAIL-C	2
3	D	REFER DETAIL-D	3
4	E	REFER DETAIL-E	9
5	F	REFER DETAIL-F	1

4										
3										
2										
1										
0		23.04.24	ORIGINAL					DSA 36 128 0 095	01	1
REV	CN.NO.	DATE	DESCRIPTION	CHECKED	APPROVED	NEXT ASSEMBLY	ITEM	QTY		
MATERIAL			FINISH	PROJ.		TOL.GEN. ± IS:2102		PRJ.		
ALUMINIUM ALLOY 5052-H32			SEE NOTE			TOL.AXIS. ± (MED)		128		
DRAWN		CHECKED	APPROVED	DIMNS	SCALE	TITLE				
MALIKSAD				mm	NTS	TOP CONNECTOR PLATE-OAS PA				
DATE 23.04.24		DATE	DATE	DRG. NUMBER		SIZE		ISSUE		
				KERALA STATE ELECTRONICS DEVELOPMENT CORPORATION LIMITED.		A3		1		
				DPD 36 128 0 396		NO.OF SHEETS		1		
								3		



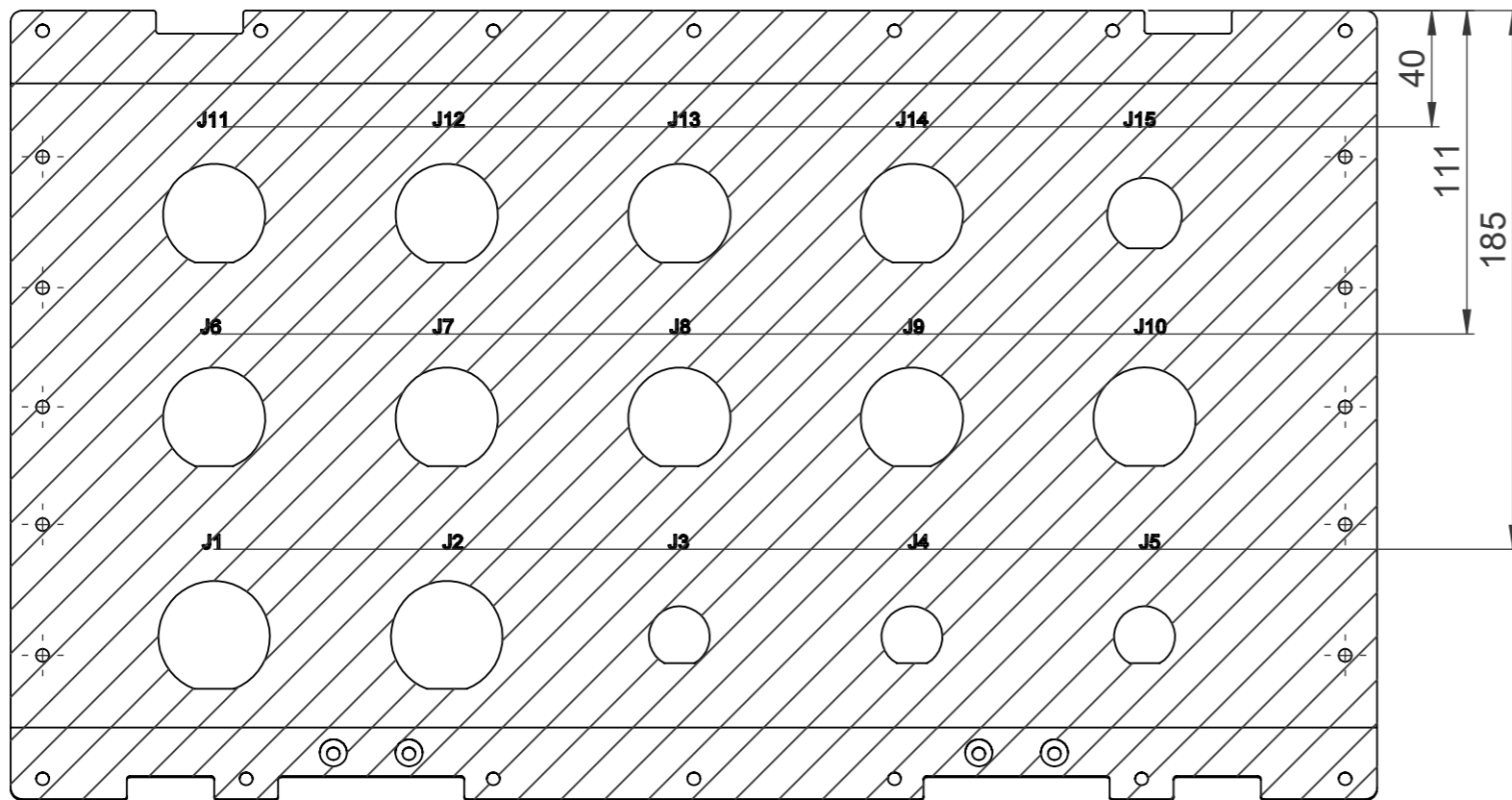
4													
3													
2													
1													
0		23.04.24		ORIGINAL				DSA 36 128 0 095	01	1			
REV	CN.NO.	DATE		DESCRIPTION	CHECKED	APPROVED		NEXT ASSEMBLY	ITEM	QTY			
MATERIAL				FINISH	PROJ.		TOL.GEN. ± IS:2102		PRJ.				
ALUMINIUM ALLOY 5052-H32				SEE NOTE			TOL.AXIS. ± (MED)		128				
DRAWN	CHECKED	APPROVED	DIMNS	SCALE	TITLE								
MALIKSAD			mm	NTS	TOP CONNECTOR PLATE-OAS PA								
DATE	23.04.24	DATE	DATE	DRG. NUMBER		SIZE		ISSUE					
				DPD 36 128 0 396		A3		1					
						NO.OF SHEETS		2		3			

ENGRAVING DETAILS

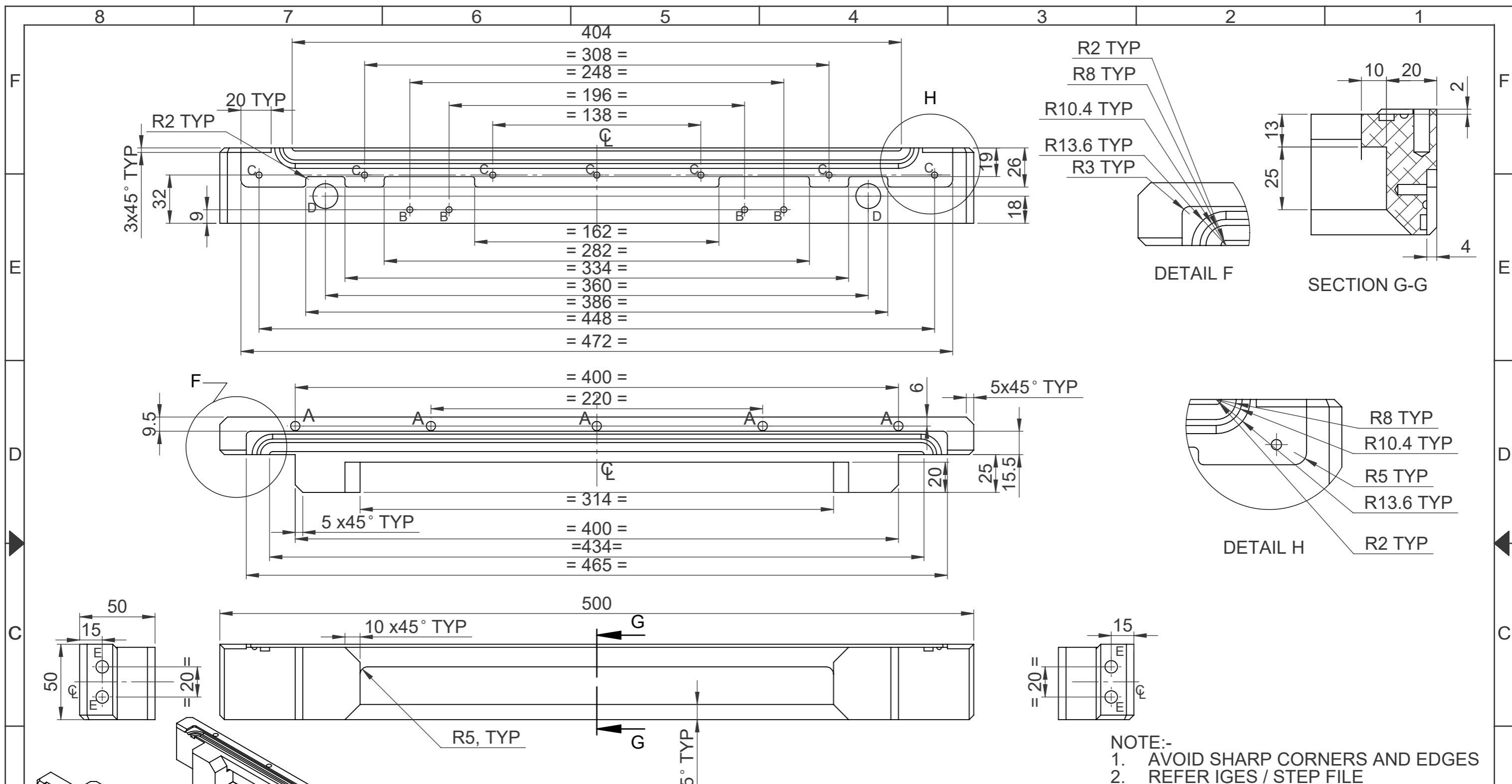


NOTE:

1. FINISH: YELLOW CC COATING AND FIRE RETARDANT YELLOW PAINTING ON OUTER SURFACE (MATT FINISH) ONLY. FOLLOW PAINT SCHEME AS PER IS 5 2004. COLOUR CODE : 352 (PALE YELLOW).
2. AVOID PAINTING ON HATCHED AREA.
3. AVOID SHARP CORNERS AND EDGES
4. 5x0.5mm ▽ TEXT TO BE ENGRAVED AND FILLED WITH BLACK PAINT
5. ENGRAVING TO BE DONE CENTRALISING WITH THE CUT OUT
6. REFER IGES / STEP FILE



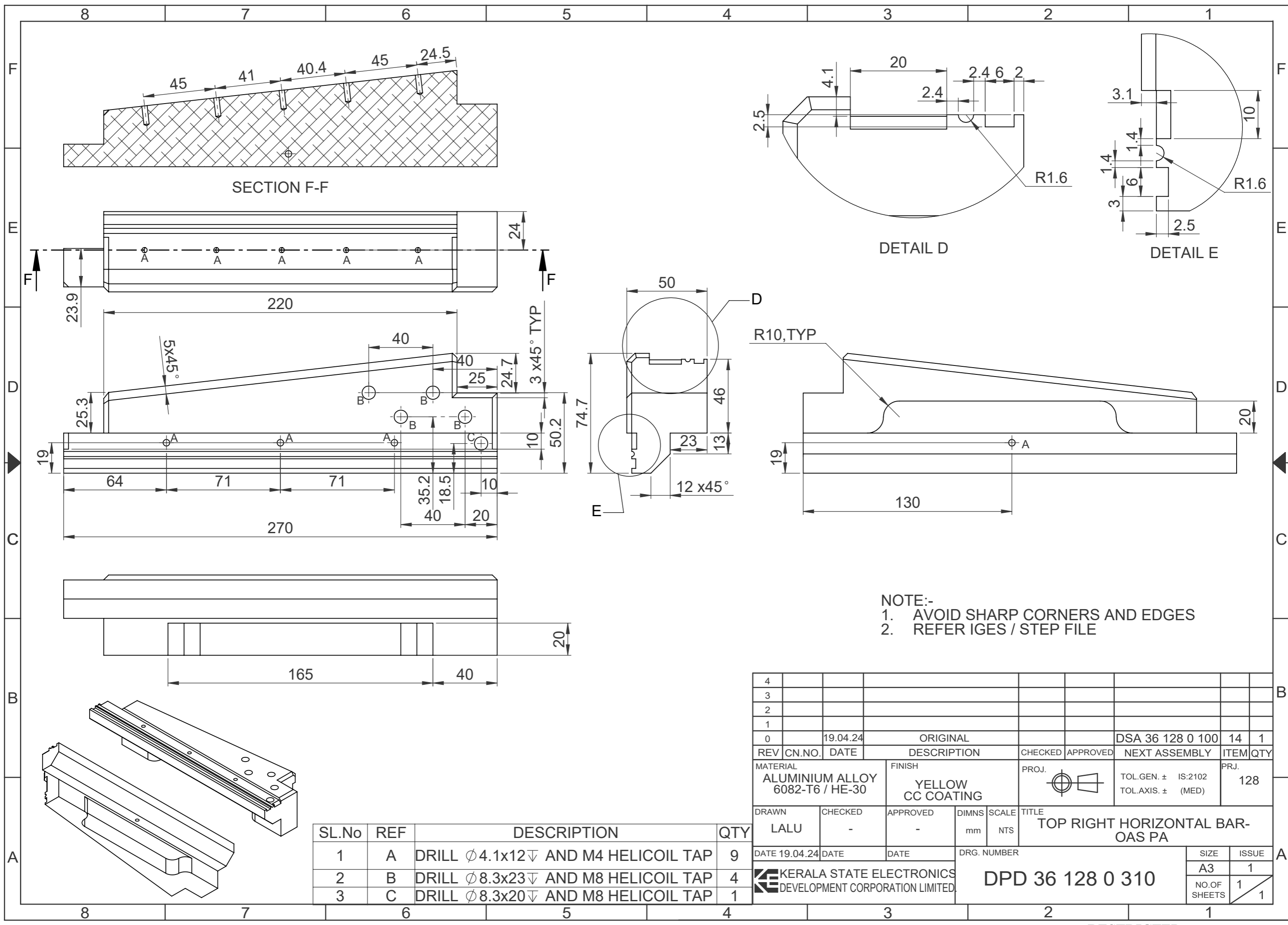
4															
3															
2															
1															
0		23.04.24		ORIGINAL						DSA 36 128 0 095	01	1			
REV	CN.NO.	DATE		DESCRIPTION	CHECKED	APPROVED				NEXT ASSEMBLY	ITEM	QTY			
MATERIAL		FINISH		PROJ.	TOL.GEN. ± IS:2102		PRJ.		TOL.AXIS. ± (MED)		128				
ALUMINIUM ALLOY 5052-H32		SEE NOTE													
DRAWN	CHECKED	APPROVED	DIMNS	SCALE	TITLE										
MALIKSAD			mm	NTS	TOP CONNECTOR PLATE-OAS PA										
DATE	23.04.24	DATE	DATE	DRG. NUMBER		SIZE		ISSUE							
		KERALA STATE ELECTRONICS DEVELOPMENT CORPORATION LIMITED.		DPD 36 128 0 396		A3		1							
						NO.OF SHEETS		3							
								3							



NOTE:-
 1. AVOID SHARP CORNERS AND EDGES
 2. REFER IGES / STEP FILE

4										
3										
2										
1										
0	19.04.24		ORIGINAL					DSA 36 128 0 100	16	1
REV	CN.NO.	DATE	DESCRIPTION	CHECKED	APPROVED	NEXT ASSEMBLY	ITEM	QTY		
MATERIAL			FINISH	PROJ.		TOL.GEN. ± IS:2102	PRJ.			
ALUMINIUM ALLOY 6082-T6 / HE 30			YELLOW CC COATING			TOL.AXIS. ± (MED)	128			
DRAWN	CHECKED	APPROVED	DIMNS	SCALE	TITLE					
LALU	-	-	mm	NTS	TOP REAR HORIZONTAL BAR-OAS PA					
DATE 19.04.24	DATE	DATE	DRG. NUMBER		SIZE		ISSUE			
KERALA STATE ELECTRONICS DEVELOPMENT CORPORATION LIMITED.			DPD 36 128 0 312		A3		1			
							NO.OF SHEETS		1	
									1	

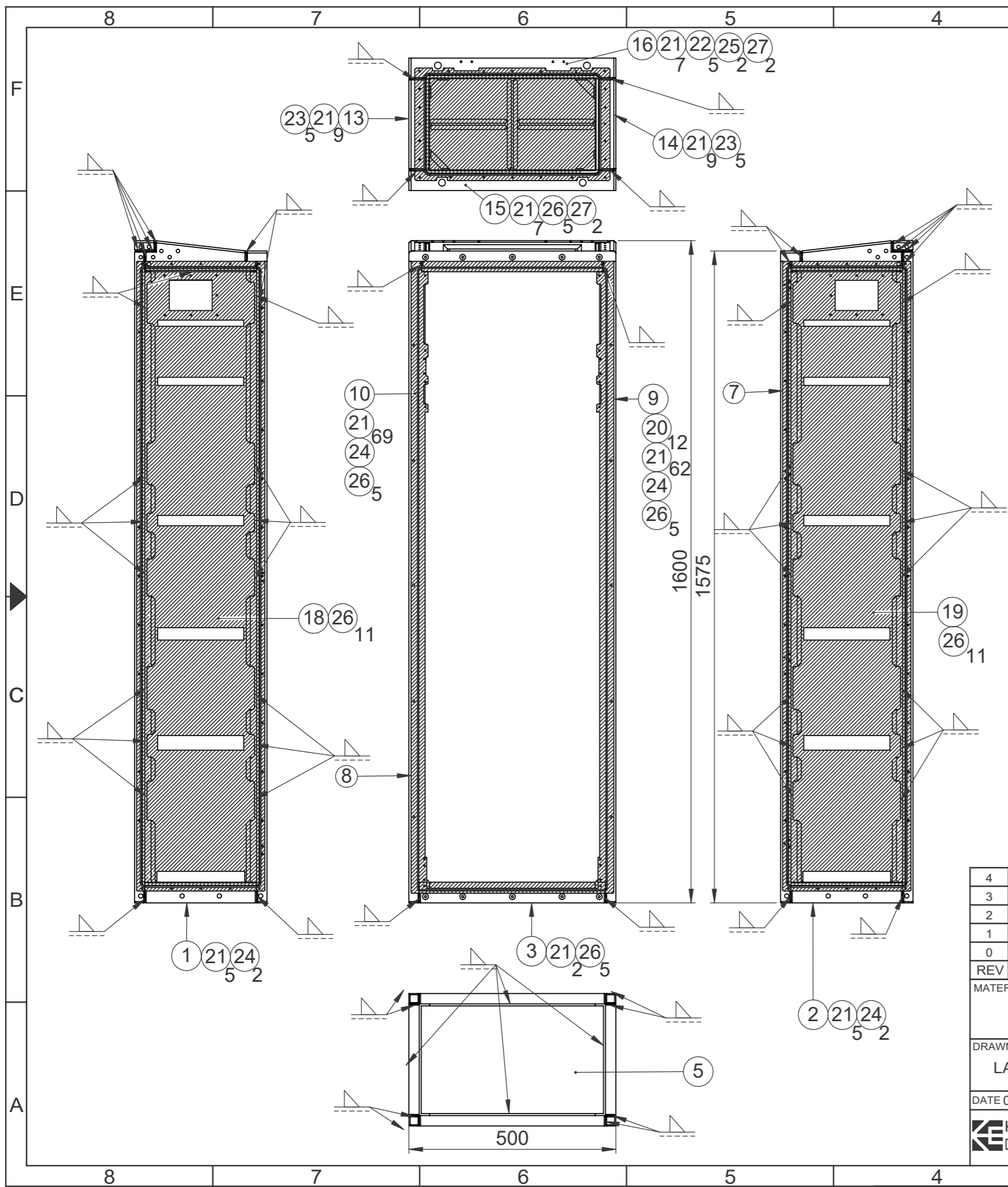
SL.No	REF	DESCRIPTION	QTY
1	A	DRILL $\phi 6.2 \times 17 \nabla$ AND M6 HELICOIL TAP	5
2	B	DRILL $\phi 4.1 \times 25 \nabla$ AND M4 HELICOIL TAP	4
3	C	DRILL $\phi 4.1 \times 12 \nabla$ AND M4 HELICOIL TAP	7
4	D	DRILL $\phi 16.5 \times 45 \nabla$ AND M16 HELICOIL TAP	2
5	E	DRILL $\phi 8.3 \times 23 \nabla$ AND M8 HELICOIL TAP	4



NOTE:-
 1. AVOID SHARP CORNERS AND EDGES
 2. REFER IGES / STEP FILE

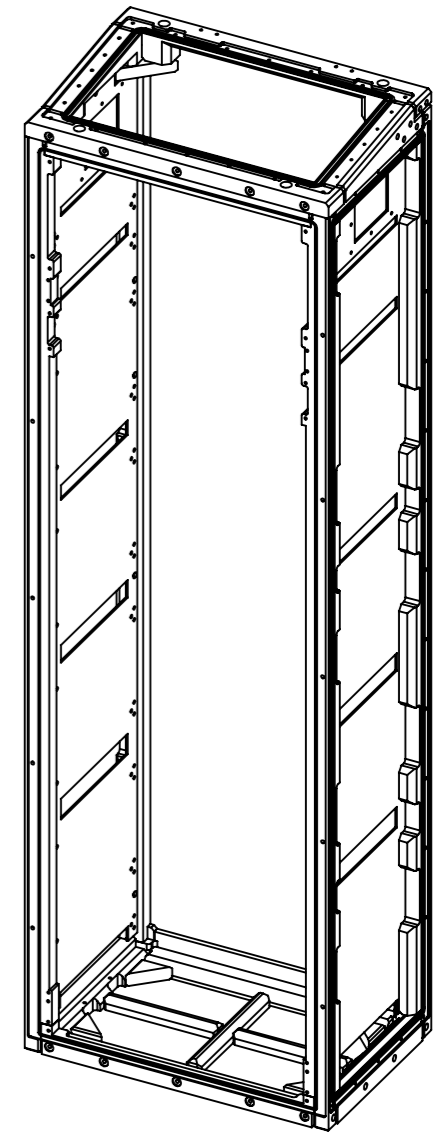
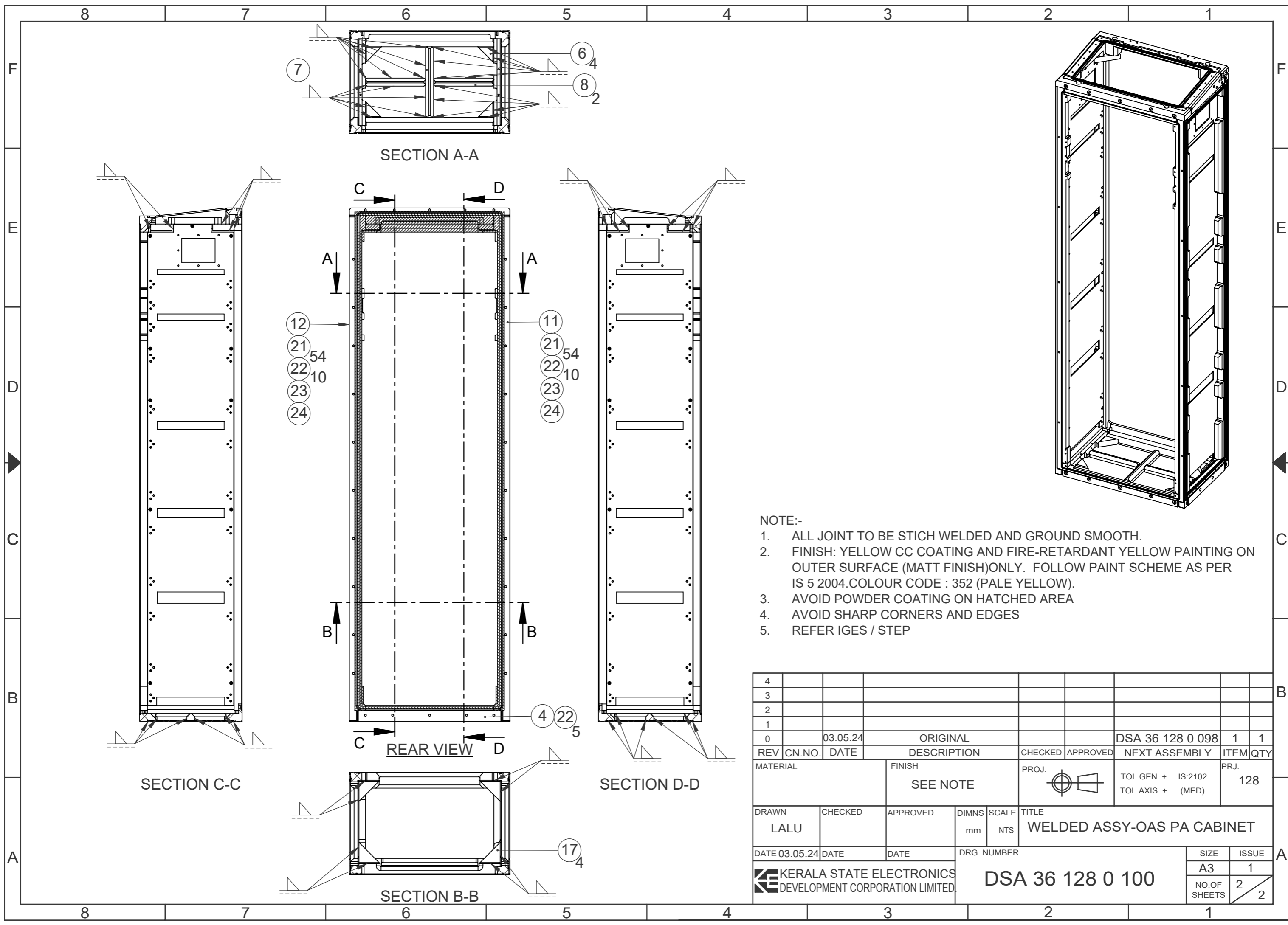
4													
3													
2													
1													
0	19.04.24		ORIGINAL					DSA 36 128 0 100	14	1			
REV	CN.NO.	DATE	DESCRIPTION	CHECKED	APPROVED	NEXT ASSEMBLY	ITEM	QTY					
MATERIAL			FINISH			PROJ.		TOL.GEN. ± IS:2102		PRJ.			
ALUMINIUM ALLOY 6082-T6 / HE-30			YELLOW CC COATING					TOL.AXIS. ± (MED)		128			
DRAWN		CHECKED		APPROVED		DIMNS		SCALE		TITLE			
LALU		-		-		mm		NTS		TOP RIGHT HORIZONTAL BAR-OAS PA			
DATE 19.04.24		DATE		DATE		DRG. NUMBER				SIZE		ISSUE	
						KERALA STATE ELECTRONICS DEVELOPMENT CORPORATION LIMITED.		DPD 36 128 0 310		A3		1	
										NO.OF SHEETS		1	
												1	

SL.No	REF	DESCRIPTION	QTY
1	A	DRILL $\phi 4.1 \times 12 \nabla$ AND M4 HELICOIL TAP	9
2	B	DRILL $\phi 8.3 \times 23 \nabla$ AND M8 HELICOIL TAP	4
3	C	DRILL $\phi 8.3 \times 20 \nabla$ AND M8 HELICOIL TAP	1



ITEM No	DESCRIPTION	PART NUMBER	QTY
1	BOTTOM LEFT HORIZONTAL BAR- OAS PA	DPD 36 128 0 297	1
2	BOTTOM RIGHT HORIZONTAL BAR- OAS PA	DPD 36 128 0 298	1
3	BOTTOM FRONT HORIZONTAL BAR- OAS PA	DPD 36 128 0 299	1
4	BOTTOM REAR HORIZONTAL BAR- OAS PA	DPD 36 128 0 300	1
5	BOTTOM PLATE- OAS PA	DPD 36 128 0 301	1
6	BOTTOM GUZZET- OAS PA	DPD 36 128 0 302	4
7	BOTTOM STIFFNER-1 OAS PA	DPD 36 128 0 303	1
8	BOTTOM STIFFNER-2 OAS PA	DPD 36 128 0 304	2
9	RIGHT FRONT VERTICAL BAR- OAS PA	DPD 36 128 0 305	1
10	LEFT FRONT VERTICAL BAR- OAS PA	DPD 36 128 0 306	1
11	LEFT REAR VERTICAL BAR- OAS PA	DPD 36 128 0 307	1
12	RIGHT REAR VERTICAL BAR- OAS PA	DPD 36 128 0 308	1
13	TOP LEFT HORIZONTAL BAR- OAS PA	DPD 36 128 0 309	1
14	TOP RIGHT HORIZONTAL BAR- OAS PA	DPD 36 128 0 310	1
15	TOP FRONT HORIZONTAL BAR- OAS PA	DPD 36 128 0 311	1
16	TOP REAR HORIZONTAL BAR- OAS PA	DPD 36 128 0 312	1
17	TOP GUZZET- OAS PA	DPD 36 128 0 313	4
18	LEFT INNER PLATE- OAS PA	DPD 36 128 0 314	1
19	RIGHT INNER PLATE - OAS PA	DPD 36 128 0 315	1
20	M3x0.5x3D HELICOIL INSERT, SS	FIS 0 3 009 0 101	12
21	M4x0.7x2.5D HELICOIL INSERT, SS	FIS 04 010 0 101	283
22	M6x1.0x2.5D HELICOIL INSERT, SS	FIS 06 015 0 101	30
23	M8x1.25x2.5D HELICOIL INSERT, SS	FIS 08 020 0 101	12
24	M10x1.5x2D HELICOIL INSERT, SS	FIS 10 020 0 101	8
25	M4x0.7x6D HELICOIL INSERT, SS	FIS 04 024 0 101	4
26	M5x0.8x3D HELICOIL INSERT, SS	FIS 04 015 0 101	20
27	M16x2.0x2.5D HELICOIL INSERT, SS	FIS 16 040 0 101	4
28	M4x12 PHILIPS CSK HD SCREW, SS	FSS 04 012 2 001	22

4									
3									
2									
1									
0	03.05.24	ORIGINAL			DSA 36 128 0 098	1	1		
REV	CN.NO.	DATE	DESCRIPTION	CHECKED	APPROVED	NEXT ASSEMBLY	ITEM	QTY	
MATERIAL	FINISH		PROJ.	TOL.GEN. ± IS:2102		PRJ.			
-	SEE NOTE			TOL.AXIS. ± (MED)		128			
DRAWN	CHECKED	APPROVED	DIMNS	SCALE	TITLE				
LALU			mm	NTS	WELDED ASSY-OAS PA CABINET				
DATE	03.05.24	DATE	DATE	DRG. NUMBER		SIZE	ISSUE		
				DSA 36 128 0 100		A3	1		
						NO.OF SHEETS	1		
							2		

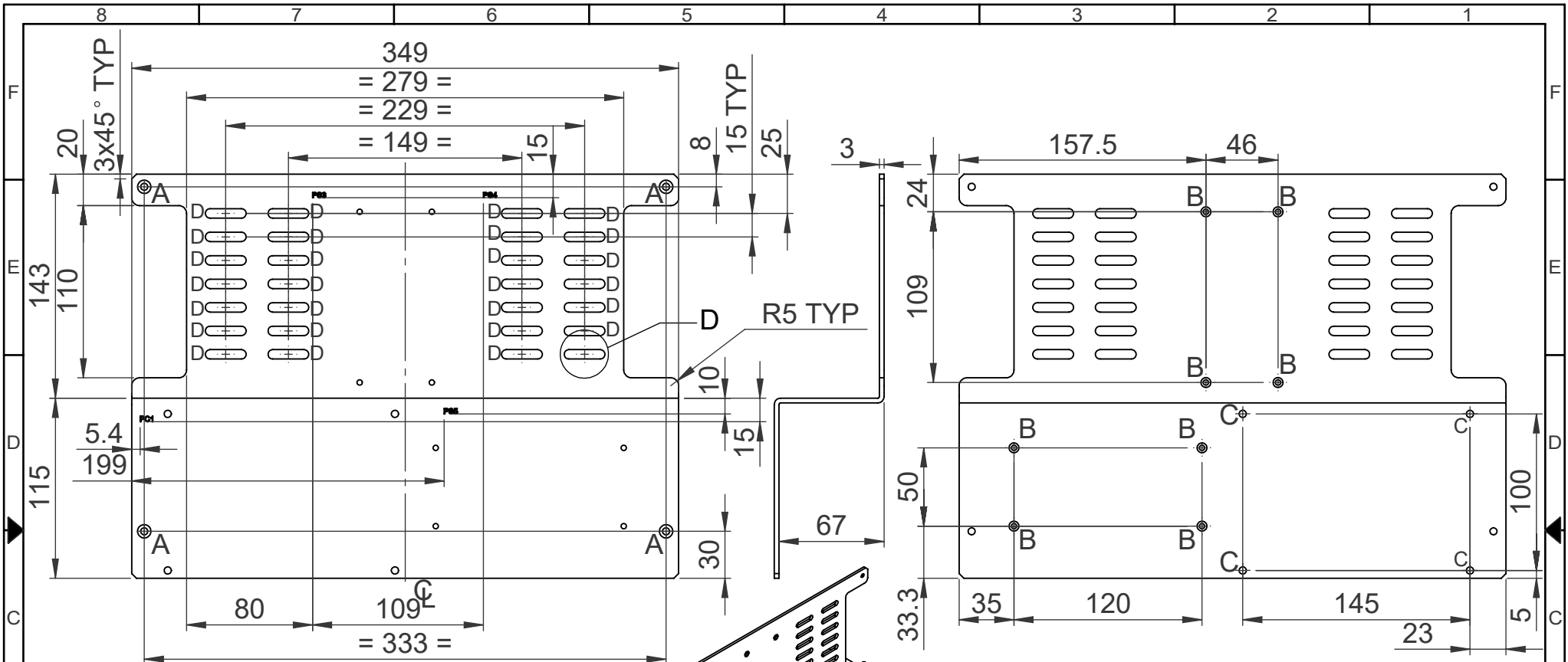


- NOTE:-
1. ALL JOINT TO BE STICH WELDED AND GROUND SMOOTH.
 2. FINISH: YELLOW CC COATING AND FIRE-RETARDANT YELLOW PAINTING ON OUTER SURFACE (MATT FINISH)ONLY. FOLLOW PAINT SCHEME AS PER IS 5 2004.COLOUR CODE : 352 (PALE YELLOW).
 3. AVOID POWDER COATING ON HATCHED AREA
 4. AVOID SHARP CORNERS AND EDGES
 5. REFER IGES / STEP

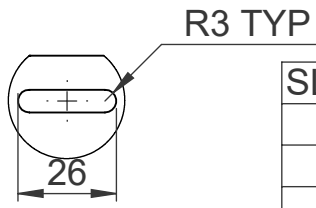
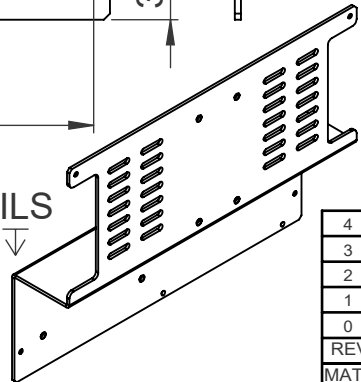
4											
3											
2											
1											
0	03.05.24		ORIGINAL					DSA 36 128 0 098	1	1	
REV	CN.NO.	DATE	DESCRIPTION	CHECKED	APPROVED	NEXT ASSEMBLY	ITEM	QTY			
MATERIAL			FINISH	PROJ.		TOL.GEN. ± IS:2102	PRJ.				
			SEE NOTE			TOL.AXIS. ± (MED)	128				
DRAWN	CHECKED	APPROVED	DIMNS	SCALE	TITLE						
LALU			mm	NTS	WELDED ASSY-OAS PA CABINET						
DATE 03.05.24	DATE	DATE	DRG. NUMBER			SIZE		ISSUE			
						A3		1			
KERALA STATE ELECTRONICS DEVELOPMENT CORPORATION LIMITED.						DSA 36 128 0 100			NO.OF SHEETS		
						2			2		

RESTRICTED

RESTRICTED



NOTE:-
 1. REFER IGES / STEP FOR MORE DETAILS
 2. ENGRAVING TEXT HEIGHT 3.5x0.5mm AND FILLED WITH BLACK PAINT

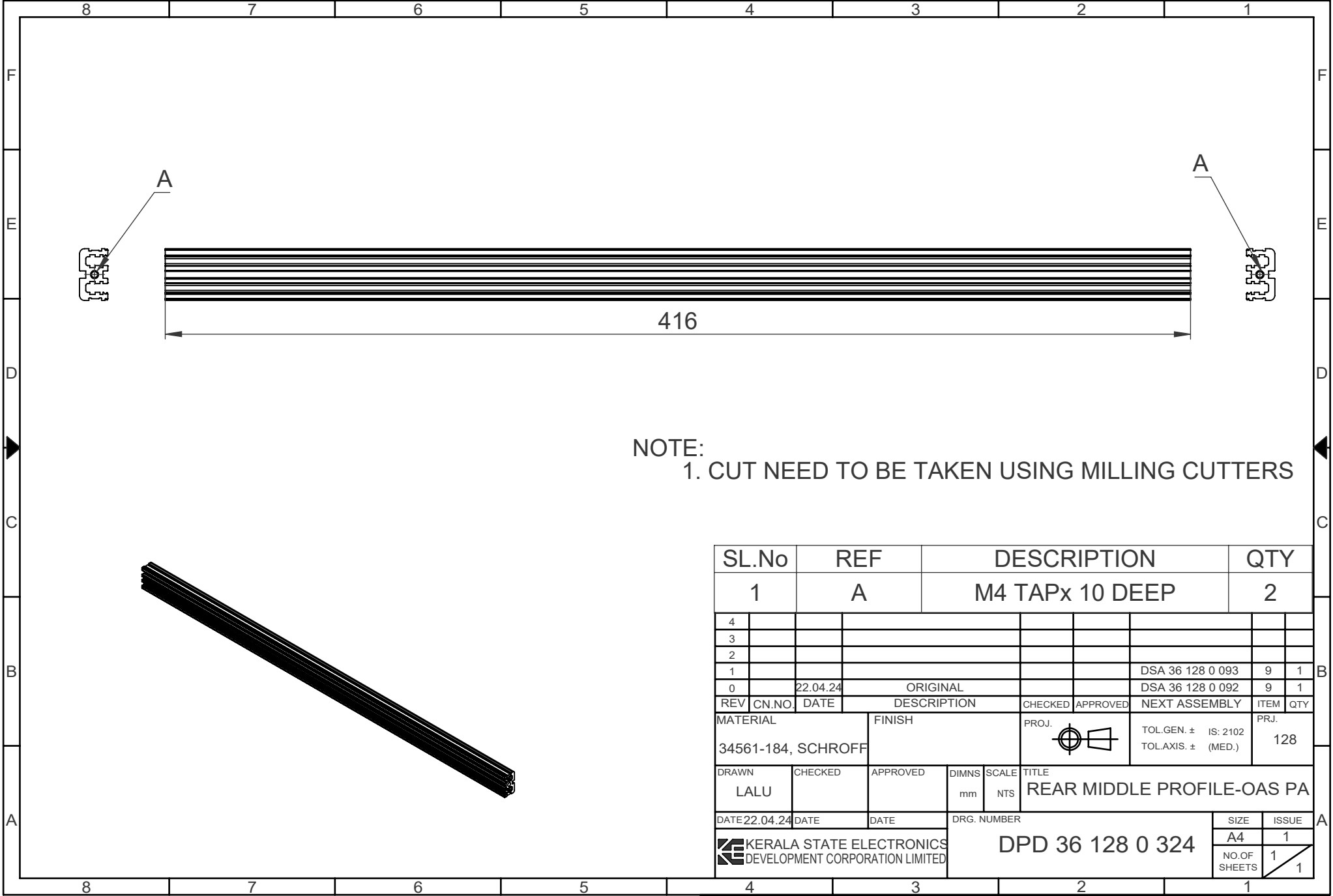


SL.No	REF	DESCRIPTION	QTY
1	A	DRILL $\phi 4.5 \checkmark \phi 8.5$	4
2	B	DRILL $\phi 3.4 \checkmark \phi 6.3$	8
3	C	$\phi 4.6$	4
4	D	SEE DETAIL 'D'	28

4									
3									
2									
1									
0	07.05.24	ORIGINAL			DSA 36 128 0 091	23	1		
REV	CN.NO.	DATE	DESCRIPTION	CHECKED	APPROVED	NEXT ASSEMBLY	ITEM	QTY	
MATERIAL		FINISH		PROJ.		TOL.GEN. \pm IS: 2102		PRJ.	
ALUMINIUM ALLOY 5052-H32		YELLOW CC COATING				TOL.AXIS. \pm (MED.)		128	
DRAWN	CHECKED	APPROVED	DIMNS	SCALE	TITLE				
LALU			mm	NTS	PS FIXING PLATE				
DATE	DATE	DATE	DRG. NUMBER		SIZE		ISSUE		
07.05.24			DPD 36 128 0 425		A4		1		
KERALA STATE ELECTRONICS DEVELOPMENT CORPORATION LIMITED						NO.OF SHEETS		1	
						1		1	

RESTRICTED

RESTRICTED

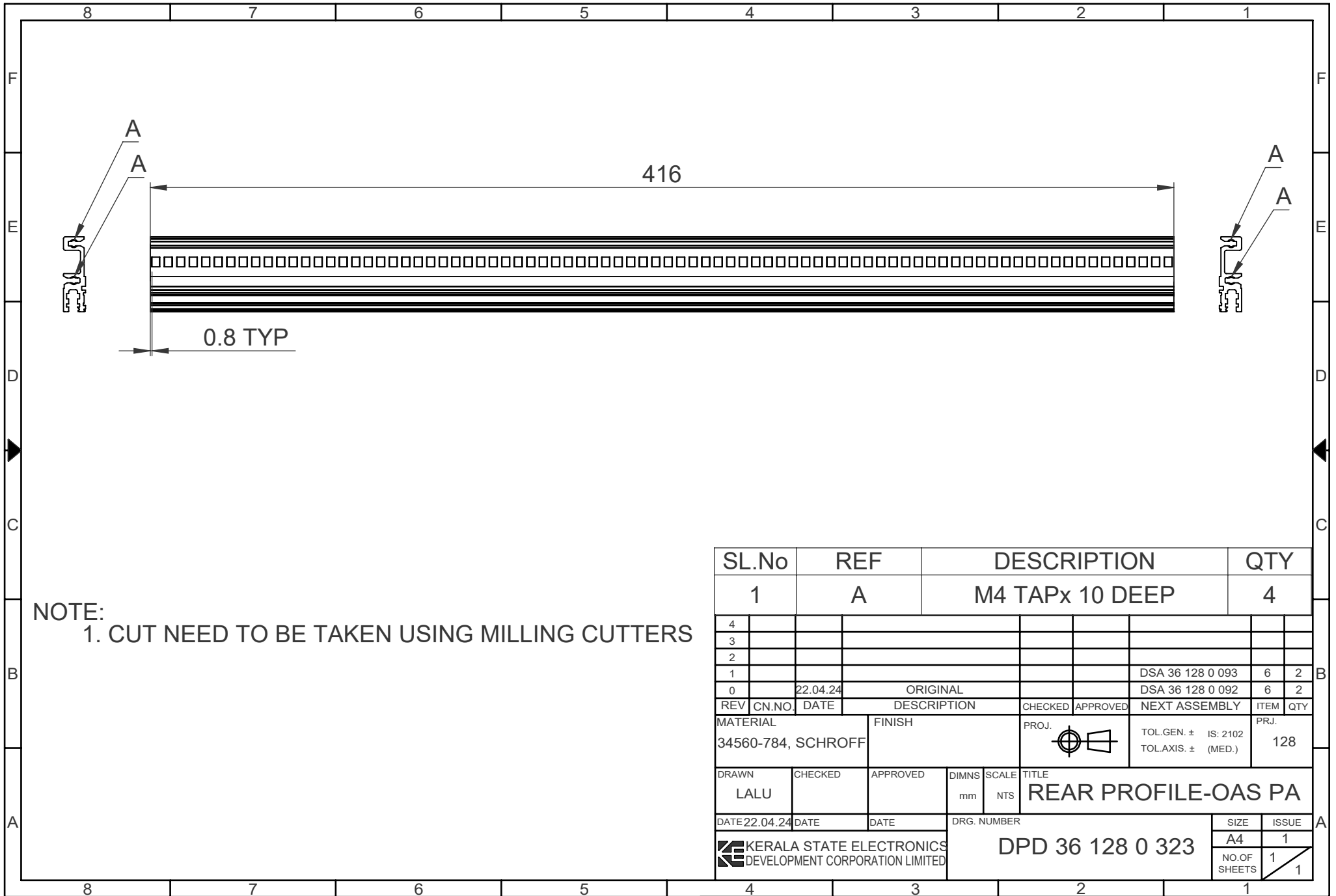


NOTE:
 1. CUT NEED TO BE TAKEN USING MILLING CUTTERS

SL.No	REF	DESCRIPTION	QTY					
1	A	M4 TAPx 10 DEEP	2					
4								
3								
2								
1								
0	22.04.24	ORIGINAL	DSA 36 128 0 093	9 1				
			DSA 36 128 0 092	9 1				
REV	CN.NO.	DATE	DESCRIPTION	CHECKED	APPROVED	NEXT ASSEMBLY	ITEM	QTY
MATERIAL		FINISH		PROJ.		PRJ.		
34561-184, SCHROFF						TOL.GEN. ± IS: 2102 TOL.AXIS. ± (MED.)		128
DRAWN	CHECKED	APPROVED	DIMNS	SCALE	TITLE			
LALU			mm	NTS	REAR MIDDLE PROFILE-OAS PA			
DATE	DATE	DATE	DRG. NUMBER		SIZE	ISSUE		
22.04.24			DPD 36 128 0 324		A4	1		
					NO.OF SHEETS	1		
						1		

RESTRICTED

RESTRICTED

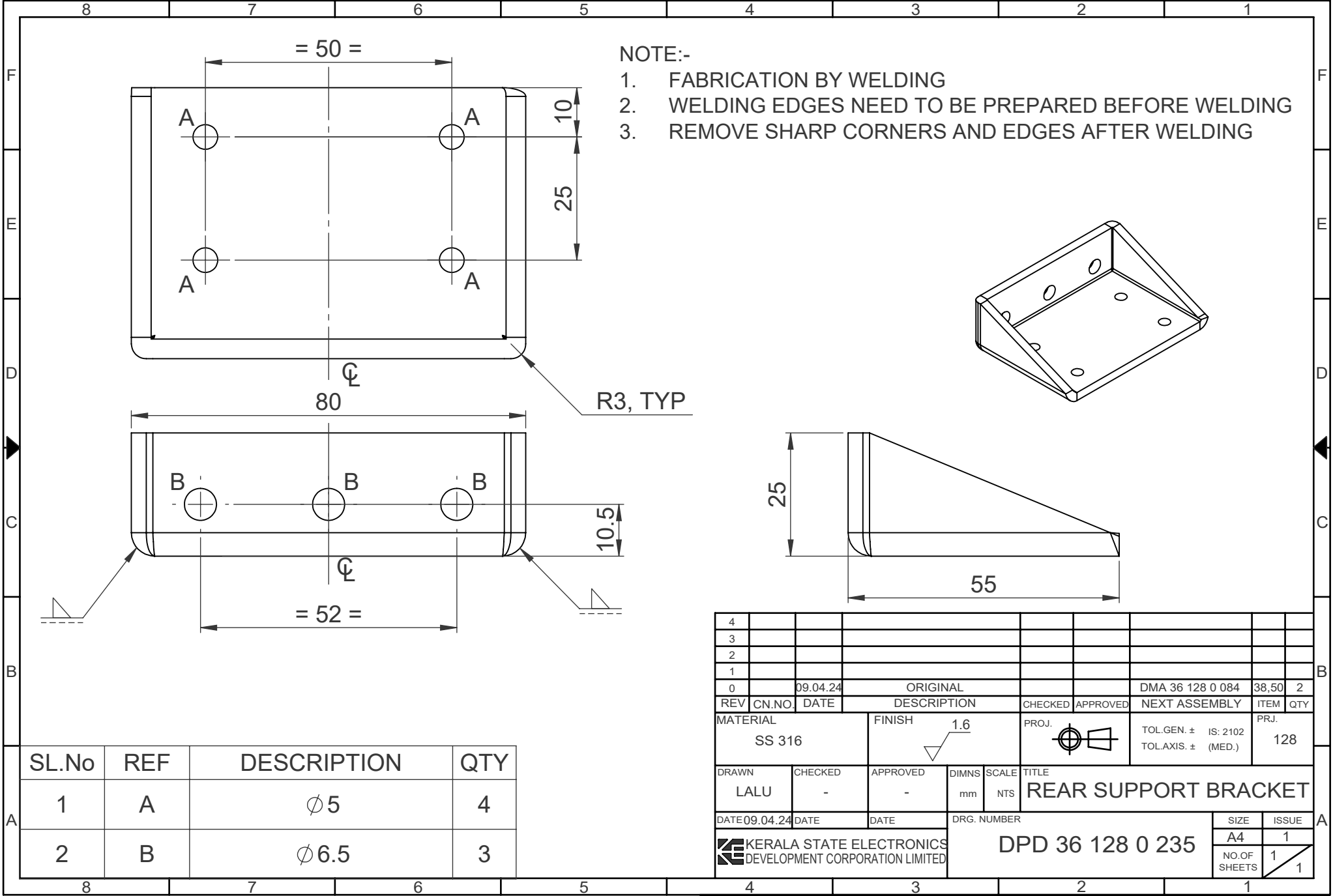


NOTE:
1. CUT NEED TO BE TAKEN USING MILLING CUTTERS

SL.No	REF	DESCRIPTION	QTY					
1	A	M4 TAPx 10 DEEP	4					
4								
3								
2								
1								
0	22.04.24	ORIGINAL						
REV	CN.NO.	DATE	DESCRIPTION	CHECKED	APPROVED	NEXT ASSEMBLY	ITEM	QTY
MATERIAL		FINISH		PROJ.		TOL.GEN. ± IS: 2102		PRJ.
34560-784, SCHROFF						TOL.AXIS. ± (MED.)		128
DRAWN	CHECKED	APPROVED	DIMNS	SCALE	TITLE			
LALU			mm	NTS	REAR PROFILE-OAS PA			
DATE	DATE	DATE	DRG. NUMBER			SIZE	ISSUE	
22.04.24			DPD 36 128 0 323			A4	1	
KERALA STATE ELECTRONICS DEVELOPMENT CORPORATION LIMITED						NO.OF SHEETS	1	
							1	

RESTRICTED

RESTRICTED



NOTE:-

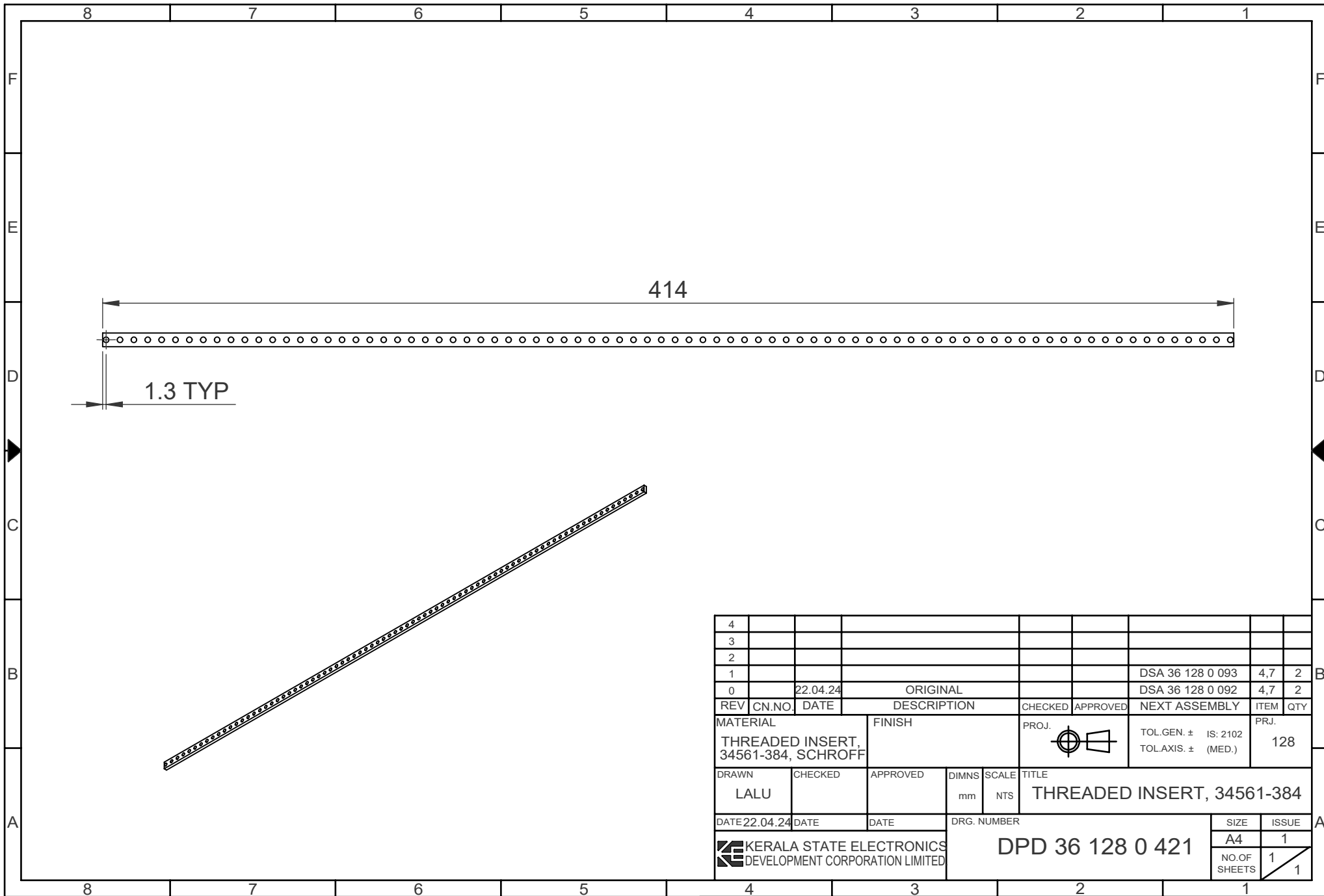
1. FABRICATION BY WELDING
2. WELDING EDGES NEED TO BE PREPARED BEFORE WELDING
3. REMOVE SHARP CORNERS AND EDGES AFTER WELDING

SL.No	REF	DESCRIPTION	QTY
1	A	∅5	4
2	B	∅6.5	3

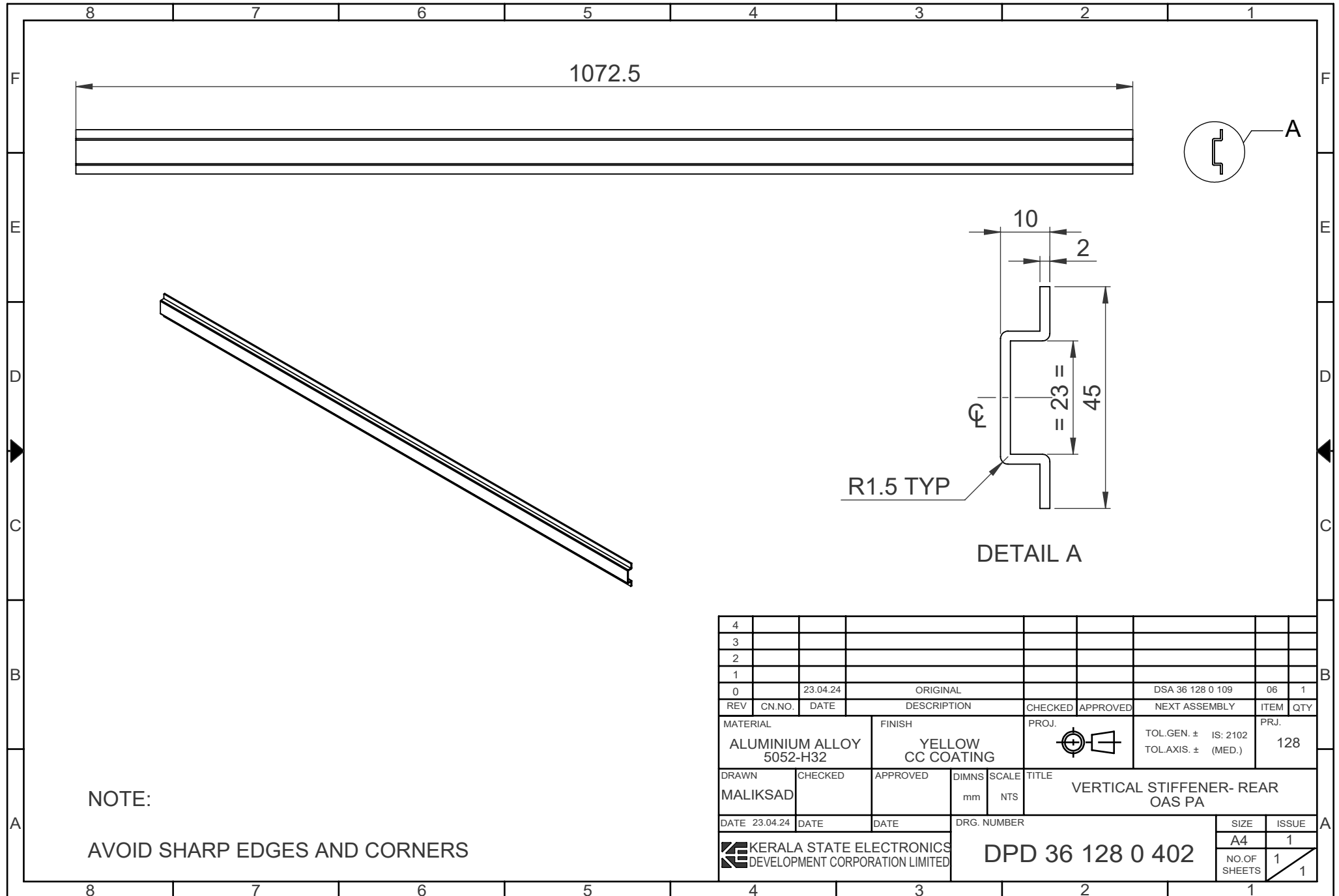
4									
3									
2									
1									
0	09.04.24		ORIGINAL			DMA 36 128 0 084	38,50	2	
REV	CN.NO.	DATE	DESCRIPTION	CHECKED	APPROVED	NEXT ASSEMBLY	ITEM	QTY	
MATERIAL			FINISH	PROJ.		TOL.GEN. ±	IS: 2102	PRJ.	
SS 316			1.6	[Symbol]		TOL.AXIS ±	(MED.)	128	
DRAWN	CHECKED	APPROVED	DIMNS	SCALE	TITLE				
LALU	-	-	mm	NTS	REAR SUPPORT BRACKET				
DATE	DATE	DATE	DRG. NUMBER			SIZE	ISSUE		
09.04.24			DPD 36 128 0 235			A4	1		
KERALA STATE ELECTRONICS DEVELOPMENT CORPORATION LIMITED						NO.OF SHEETS	1		
							1		

RESTRICTED

RESTRICTED



4											
3											
2											
1								DSA 36 128 0 093	4,7	2	
0		22.04.24		ORIGINAL				DSA 36 128 0 092	4,7	2	
REV	CN.NO.	DATE	DESCRIPTION			CHECKED	APPROVED	NEXT ASSEMBLY	ITEM	QTY	
MATERIAL			FINISH			PROJ.		TOL.GEN. ± IS: 2102		PRJ.	
THREADED INSERT, 34561-384, SCHROFF								TOL.AXIS ± (MED.)		128	
DRAWN	CHECKED	APPROVED	DIMNS	SCALE	TITLE						
LALU			mm	NTS	THREADED INSERT, 34561-384						
DATE 22.04.24	DATE	DATE	DRG. NUMBER				SIZE	ISSUE			
							DPD 36 128 0 421		A4	1	
							NO.OF SHEETS	1	1		



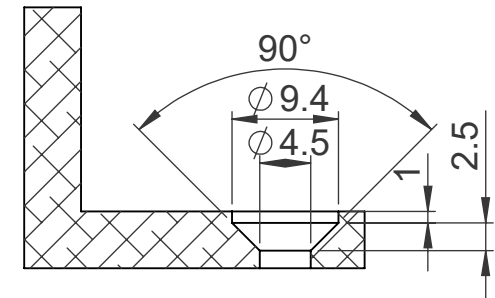
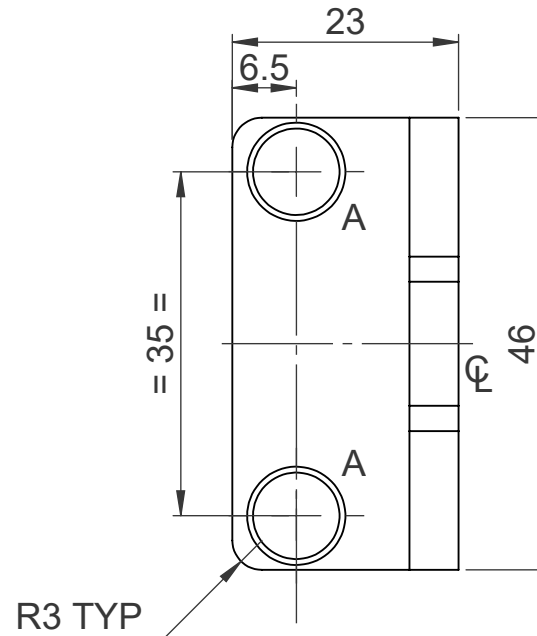
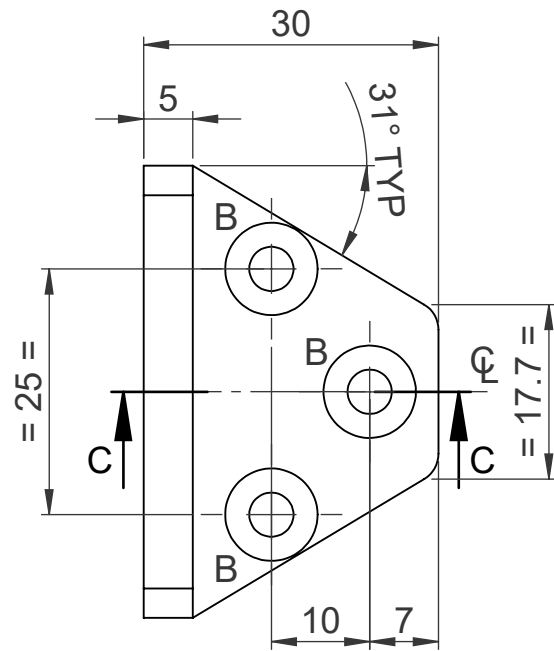
NOTE:

AVOID SHARP EDGES AND CORNERS

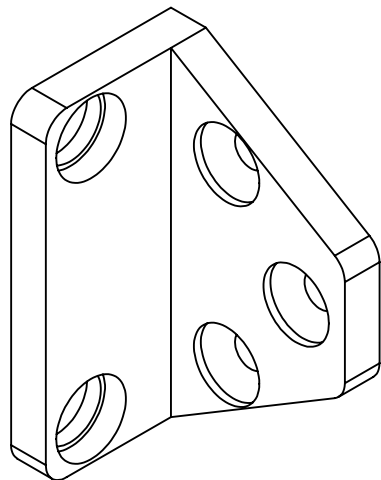
4										
3										
2										
1										
0		23.04.24		ORIGINAL				DSA 36 128 0 109	06	1
REV	CN.NO.	DATE	DESCRIPTION			CHECKED	APPROVED	NEXT ASSEMBLY	ITEM	QTY
MATERIAL		FINISH		PROJ.		TOL.GEN. ± IS: 2102		PRJ.		
ALUMINIUM ALLOY 5052-H32		YELLOW CC COATING				TOL.AXIS. ± (MED.)		128		
DRAWN	CHECKED	APPROVED	DIMNS	SCALE	TITLE					
MALIKSAD			mm	NTS	VERTICAL STIFFENER- REAR OAS PA					
DATE 23.04.24	DATE	DATE	DRG. NUMBER			SIZE	ISSUE			
			KERALA STATE ELECTRONICS DEVELOPMENT CORPORATION LIMITED			DPD 36 128 0 402	A4	1		
							NO.OF SHEETS	1		
								1		

RESTRICTED

RESTRICTED



SECTION C-C



SL.No	REF	DESCRIPTION	QTY
1	A	DRILL ϕ 8.8 \square ϕ 10x3 ∇	2
2	B	REFER 'SECTION C-C'	3

4										
3										
2										
1										
0	20.04.24	ORIGINAL			DSA 36 128 0 107	2	2			
REV	CN.NO.	DATE	DESCRIPTION	CHECKED	APPROVED	NEXT ASSEMBLY	ITEM	QTY		
MATERIAL		FINISH		PROJ.		TOL.GEN. \pm IS: 2102		PRJ.		
ALUMINIUM ALLOY 6082-T6 / HE-30		YELLOW CC COATING				TOL.AXIS. \pm (MED.)		128		
DRAWN	CHECKED	APPROVED	DIMNS	SCALE	TITLE					
LALU			mm	NTS	SIDE FLANGE AXIAL FC-OAS PS					
DATE	20.04.24	DATE	DATE	DRG. NUMBER			SIZE	ISSUE		
KERALA STATE ELECTRONICS DEVELOPMENT CORPORATION LIMITED				DPD 36 128 0 383			A4	1		
						NO.OF SHEETS	1			
							1			